



ASR-04-501

DEPARTMENT OF ARCHITECTURE

CERTIFICATE OF APPRECIATION

Maria Veronica Gandha S.T.

M.Arch.

in recognition as speaker in:
Architectural Design Week 2021

Workshop

RECAKA:

Public Space for Healing Common Stress

on June 25th - July 7th 2021
Via Zoom

Ir. Franky Liauw, M.T.
Head of Architecture Undergraduate Program
Faculty of Engineering, Universitas Tarumanagara

Rafael Kelvin Herawan
Head of IMARTA - SKETSAs
2020-2021

Owen Sebastian
Head of Majalah
SKETSAs 2020-2021

Joan Valerie
Head of Architectural
Design Week 2021

HEALING Architecture & Environment

M. Veronica Gandha
Workshop RECAKA –ADW 2021

M. Veronica Gandha - Workshop RECAKA –ADW 2021

HEALING ...?

Healing : Penyembuhan
Pengobatan

Healing Architecture:

The built environment has the ability to impact patients' health and psychological well-being.

M. Veronica Gandha - Workshop RECAKA –ADW 2021

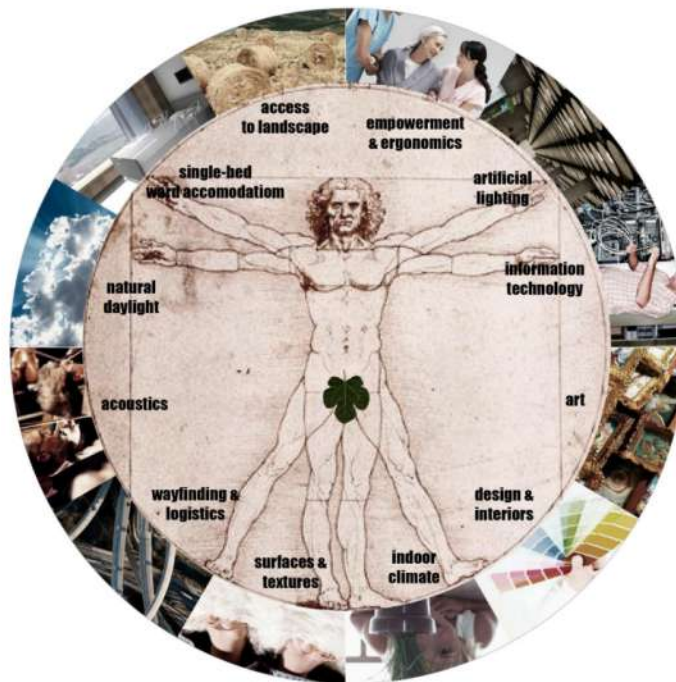
The Questions

- Can Architecture aid the healing process?
- How does it affect human psychology and senses?
- What can we do to make Therapeutic - Healing Architecture?

Architecture is an ART

Collaborations of science, expressions, aesthetics, technology, and satisfaction of human needs.

M. Veronica Gandha - Workshop RECAKA -ADW 2021



M. Veronica Gandha - Workshop RECAKA -ADW 2021

OPTIMAL HEALING ENVIRONMENT

OHE: *Optimal Healing Environments* by Teri Ibarowski

WELLNESS

Achieving balance and wholeness
in body, mind, and spirit

EFFICIENCY

Providing
quick, accessible care

SUSTAINABILITY

Environmentally friendly
architecture



+ Technology

M. Veronica Gandha - Workshop RECAKA-ADW 2021

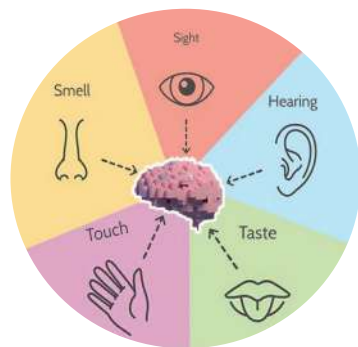
OPTIMAL HEALING ENVIRONMENTS

Surround the individual with elements that facilitate the innate healing process.



M. Veronica Gandha - Workshop RECAKA-ADW 2021

Architecture – for healing



OPEN SPACES

LIGHT (Natural & Artificial)

FENESTRATIONS

COLOR

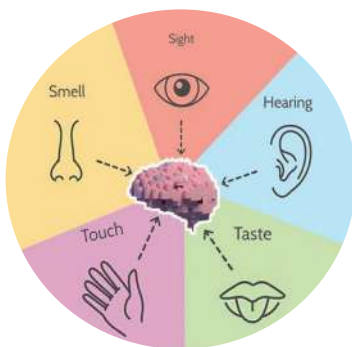
MATERIAL

ACCOUSTICS

M. Veronica Gandha - Workshop RECAKA –ADW 2021

Architecture-Environment

– for healing



OPEN SPACES

LIGHT (Natural & Artificial)

FENESTRATIONS

COLOR

MATERIAL

ACCOUSTICS



M. Veronica Gandha - Workshop RECAKA –ADW 2021

OPEN SPACES

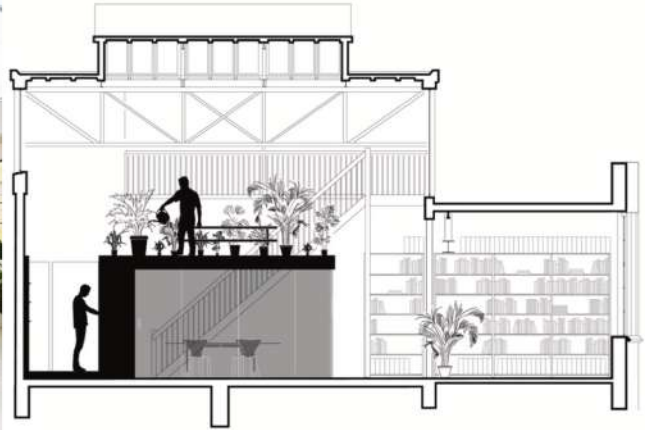
Many clinical studies have proven the **positive effect of nature and exposure to the outdoors**; towards distraction from stress and anxiety levels of patients in a Health care setup

M. Veronica Gandha - Workshop RECAKA –ADW 2021



M. Veronica Gandha - Workshop RECAKA –ADW 2021

Bring "Open Space insight"



M. Veronica Gandha - Workshop RECAKA -ADW 2021

ROLE OF LIGHT IN TREATMENT

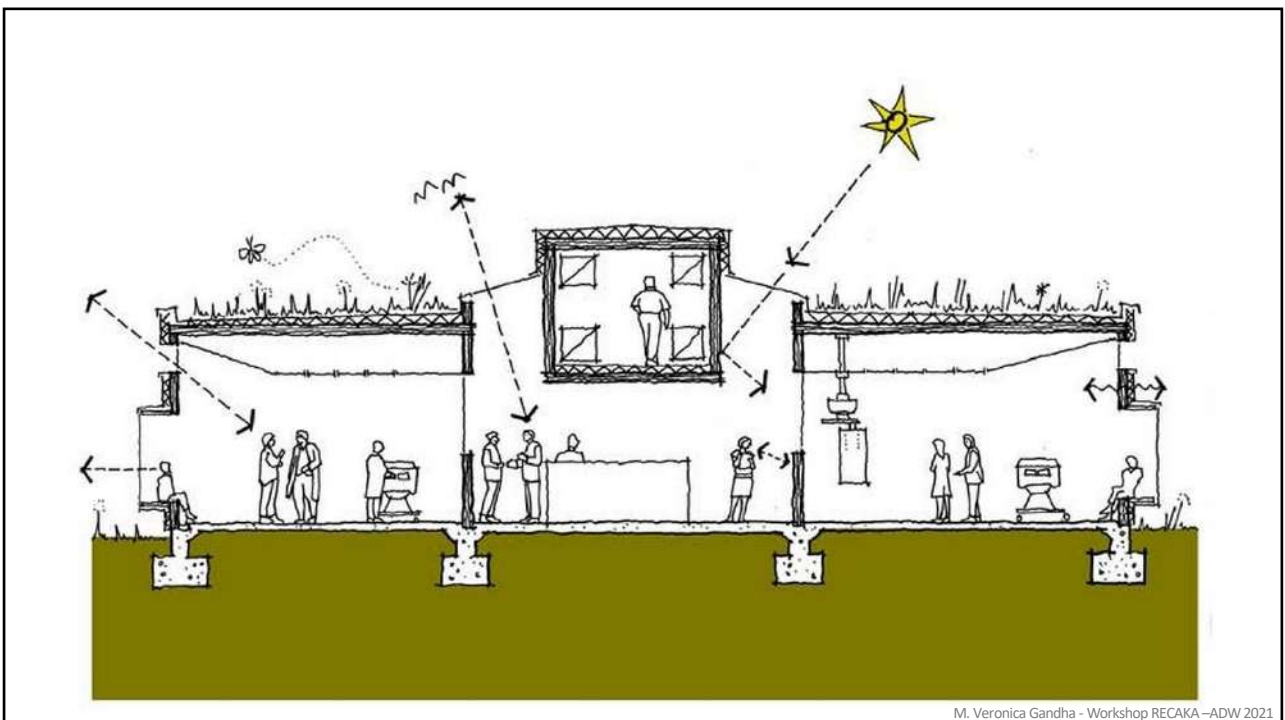
Light plays a critical role in human life and daily affairs that we can hardly imagine our existence without it

Importance of Artificial Light

- The artificial lighting should be highly flexible and adaptable to one's needs,

In a study conducted, 92% of the patient's considered **sunlight to be pleasurable and calming** respectively.

M. Veronica Gandha - Workshop RECAKA -ADW 2021



FENESTRATIONS

- Ulrich through his work '**power of the window**' has shown and proven scientifically how the patients in hospital recovered faster when their rooms



M. Veronica Gandha - Workshop RECAKA -ADW 2021

COLOR

- Colors can have a significant impact on the psyche of patients; **certain colors intend to encourage activities, while others promote passive behavior.**

M. Veronica Gandha - Workshop RECAKA –ADW 2021



M. Veronica Gandha - Workshop RECAKA –ADW 2021

MATERIALS

- Materials too are considered to leave a direct influence on the overall sense of the environment like the ability to affect the sound environment, circulate movement, increase /decrease comfort and various other actions. Building materials used in therapeutic architecture should be carefully chosen – like natural materials if used in such spaces have not only a healing benefit but also an ecological one. **If a building is harmonious and close to nature, it has a positive effect on the environment too.**

M. Veronica Gandha - Workshop RECAKA –ADW 2021



M. Veronica Gandha - Workshop RECAKA –ADW 2021



M. Veronica Gandha - Workshop RECAKA –ADW 2021

ACOUSTICS

- Blomkvist et al 2005, through his work, has tried to show how the **improved acoustics can have a positive effect on the psychosocial environment**

M. Veronica Gandha - Workshop RECAKA –ADW 2021

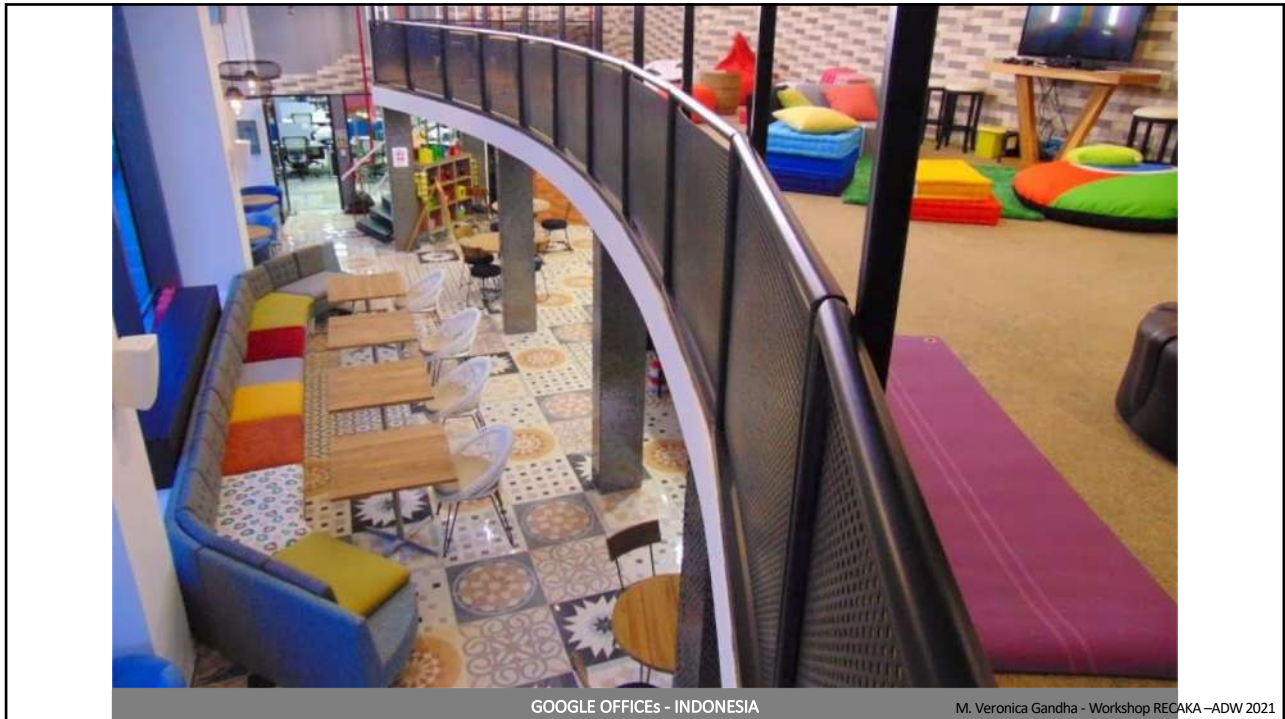
“Architecture is the masterly, correct magnificent play of masses brought together in light.” [Light](#) and [color](#) also play a vital role in [sensory design](#) in terms of visual effect. Shadows help in representing mass and volume better by way of depth. “In great spaces of architecture, there is constant, deep breathing of shadow and light; shadow inhales, and illumination exhales, light.”

(Juhani Pallasmaa, 2012)..

M. Veronica Gandha - Workshop RECAKA –ADW 2021

GOOGLE OFFICES

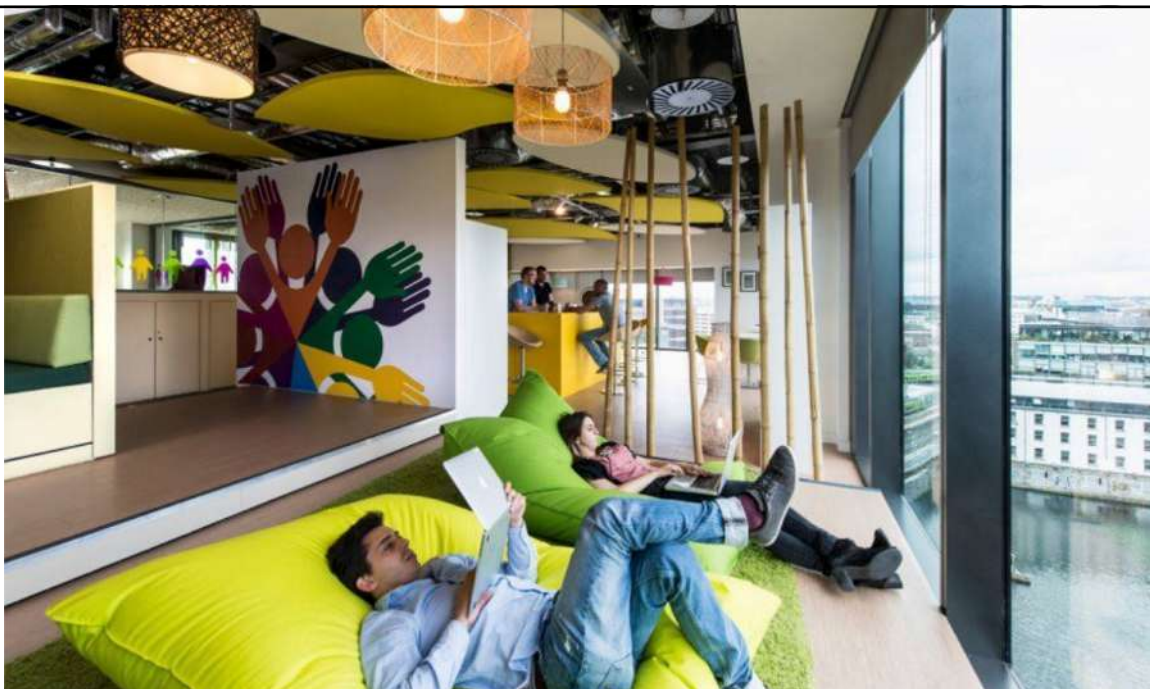
M. Veronica Gandha - Workshop RECAKA –ADW 2021



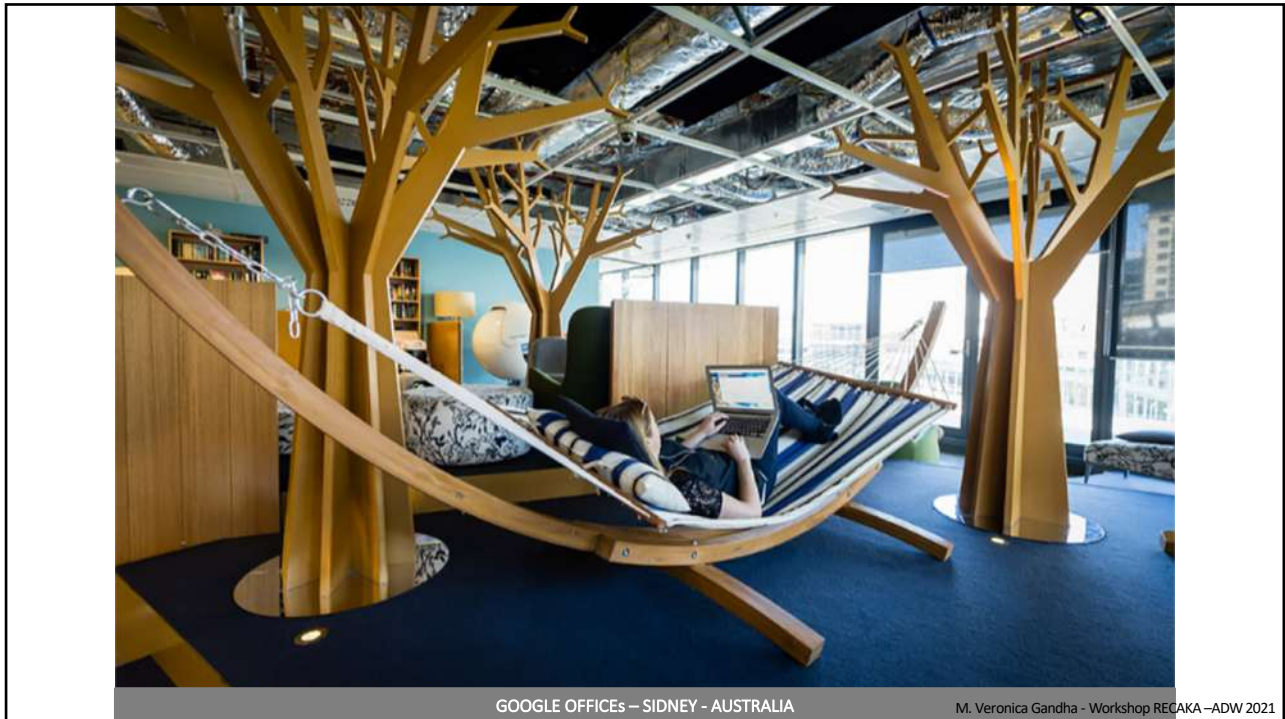


GOOGLE OFFICES - DUBLIN IRLANDIA

M. Veronica Gandha - Workshop RECAKA -ADW 2021



M. Veronica Gandha - Workshop RECAKA -ADW 2021



GOOGLE OFFICES – SIDNEY - AUSTRALIA

M. Veronica Gandha - Workshop RECAKA –ADW 2021



GOOGLE OFFICES – SIDNEY - AUSTRALIA

M. Veronica Gandha - Workshop RECAKA –ADW 2021



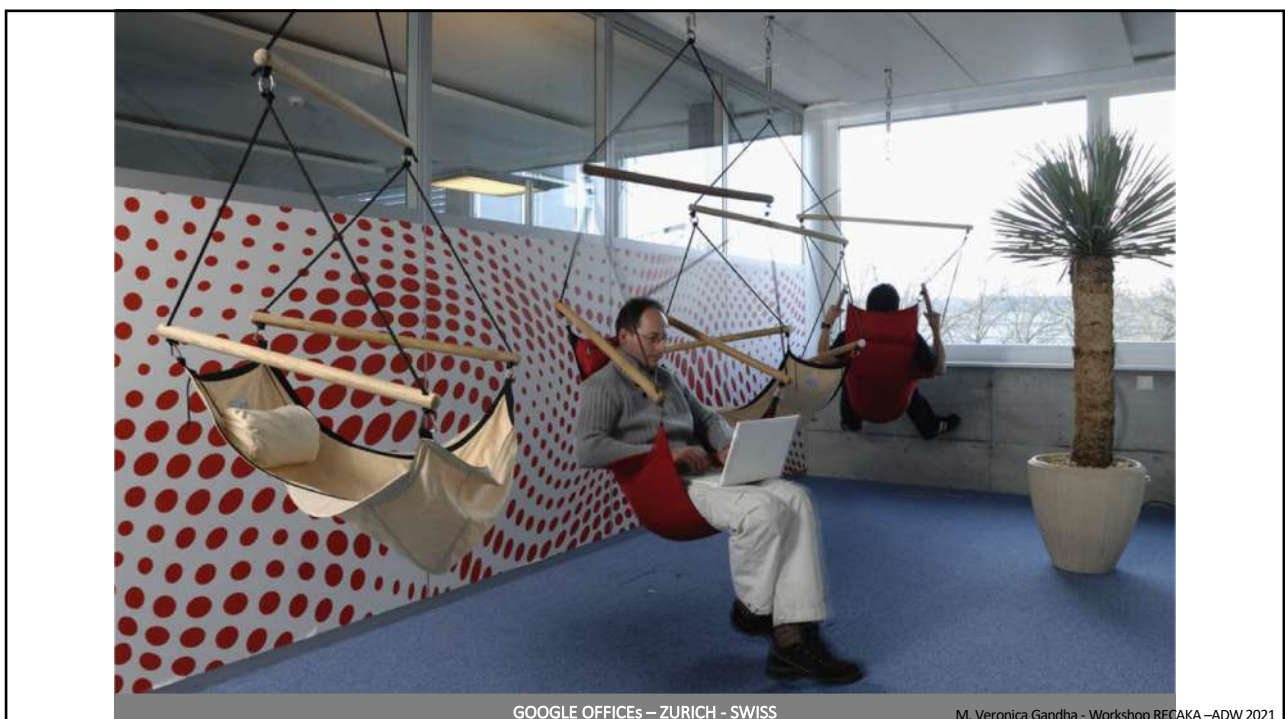
GOOGLE OFFICES – TEL AVIV - ISRAEL

M. Veronica Gandha - Workshop RECAKA –ADW 2021



GOOGLE OFFICES – ZURICH - SWISS

M. Veronica Gandha - Workshop RECAKA –ADW 2021





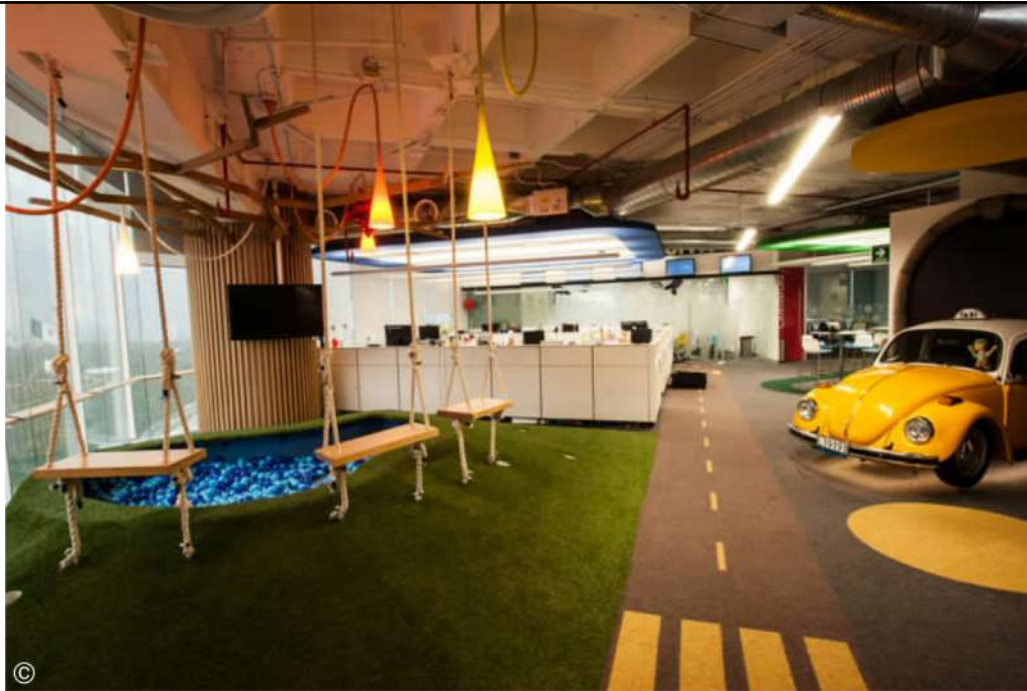
GOOGLE OFFICES – ZURICH – SWISS

M. Veronica Gandha - Workshop RECAKA –ADW 2021

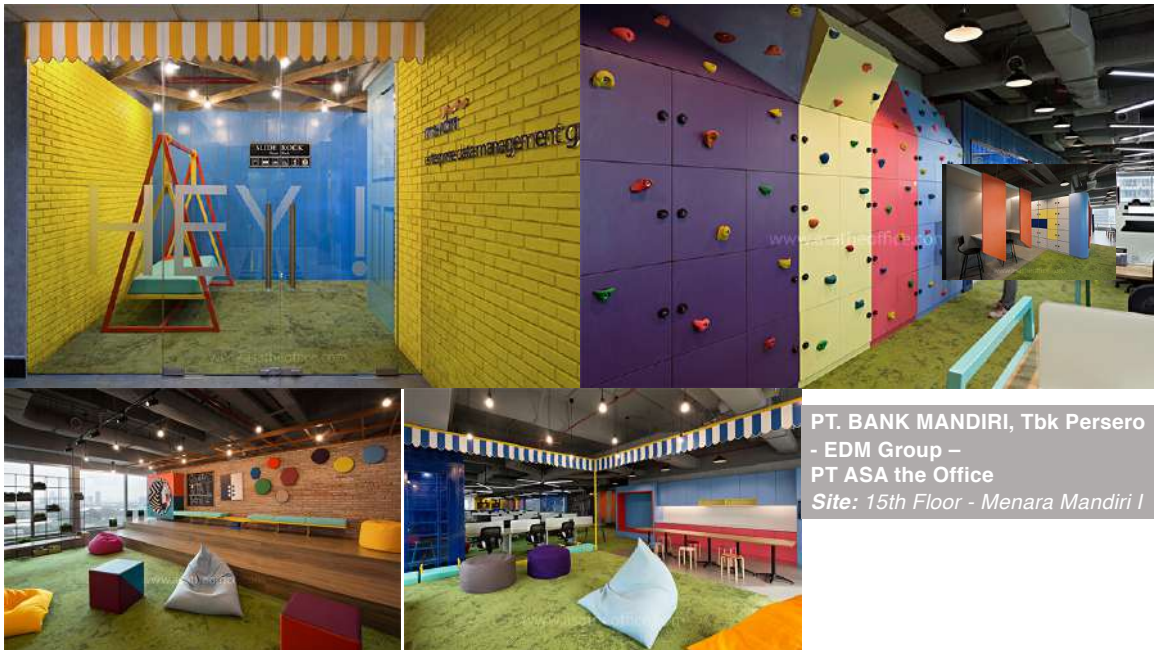


GOOGLE OFFICES – ZURICH – SWISS

M. Veronica Gandha - Workshop RECAKA –ADW 2021

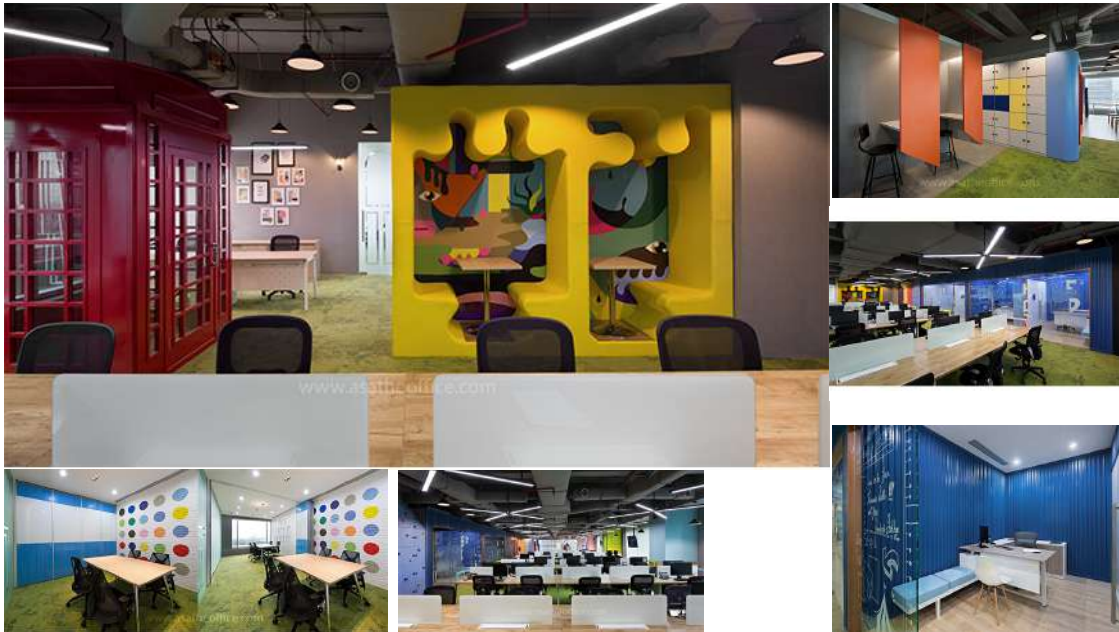


M. Veronica Gandha - Workshop RECAKA –ADW 2021



PT. BANK MANDIRI, Tbk Persero
- EDM Group –
PT ASA the Office
Site: 15th Floor - Menara Mandiri I

M. Veronica Gandha - Workshop RECAKA –ADW 2021



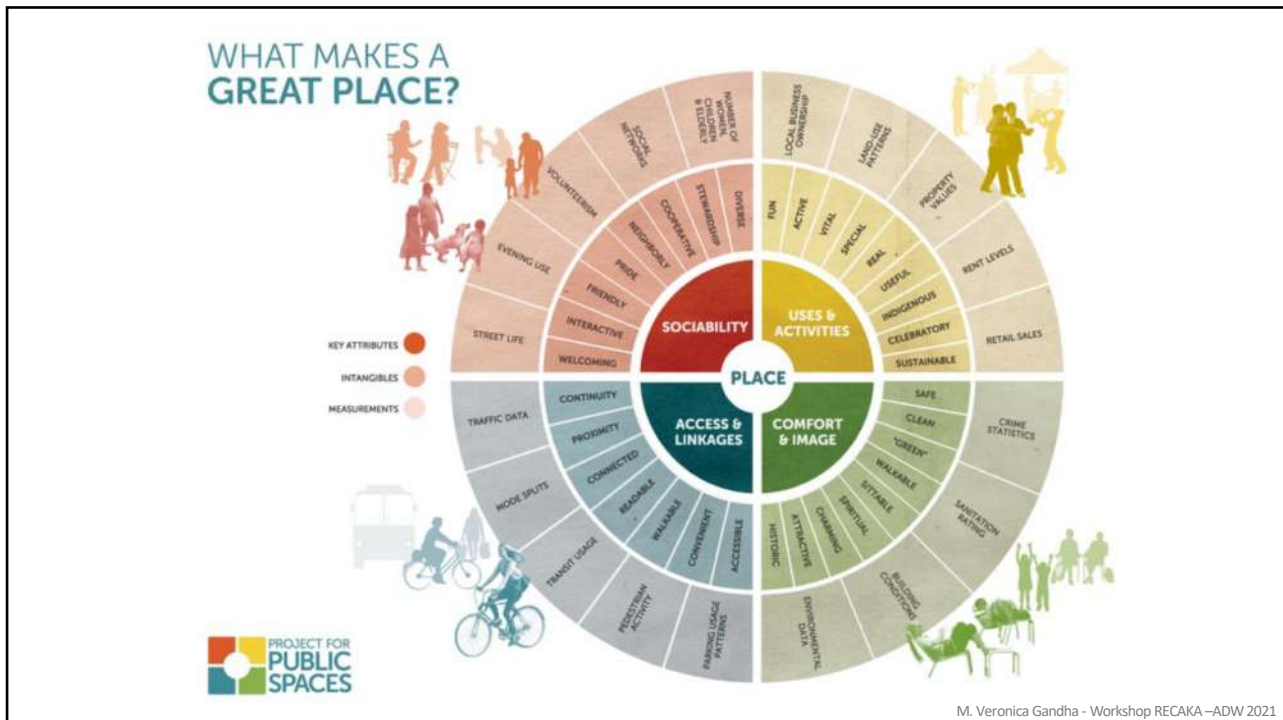
M. Veronica Gandha - Workshop RECAKA –ADW 2021

AS a PUBLIC SPACE

- Access & Linkages
- Comfort and has a good images
- Uses & Activities
- Sociability

Therapeutic Architecture: Role of Architecture in Healing Process – Ahmad Zohby

M. Veronica Gandha - Workshop RECAKA –ADW 2021



ACCESS & LINKAGES

Questions to consider on Access & Linkages:

- Can you see the space from a distance? Is its interior visible from the outside?
- Is there a good connection between the space and the adjacent buildings, or is it surrounded by blank walls? Do occupants of adjacent buildings use the space?
- Can people easily walk to the place? For example, do they have to dart between moving cars to get to the place?
- Do sidewalks lead to and from the adjacent areas?
- Does the space function for people with special needs?
- Do the roads and paths through the space take people where they actually want to go?
- Can people use a variety of transportation options - bus train, car, bicycle, etc. - to reach the place?
- Are transit stops conveniently located next to destinations such as libraries, post offices, park entrances, etc.?

M. Veronica Gandha - Workshop RECAKA-ADW 2021



Jay Pritzker Pavilion – MILLENNIUM PARK – CHICAGO – Frank Gehry

M. Veronica Gandha - Workshop RECAKA –ADW 2021

COMFORT & IMAGE

Questions to consider on Comfort & Image:

- Does the place make a good first impression?
- Are there more women than men?
- Are there enough places to sit? Are seats conveniently located? Do people have a choice of places to sit, either in the sun or shade?
- Are spaces clean and free of litter? Who is responsible for maintenance? What do they do? When?
- Does the area feel safe? Is there a security presence? If so, what do these people do? When are they on duty?
- Are people taking pictures? Are there many photo opportunities available?
- Do vehicles dominate pedestrian use of the space, or prevent them from easily getting to the space? .

M. Veronica Gandha - Workshop RECAKA –ADW 2021



Jay Pritzker Pavilion – MILLENNIUM PARK – CHICAGO – Frank Gehry

M. Veronica Gandha - Workshop RECAKA –ADW 2021



M. Veronica Gandha - Workshop RECAKA –ADW 2021

USES & ACTIVITIES

Questions to consider on uses & activities:

- Are people using the space or is it empty?
- Is it used by people of different ages?
- Are people in groups?
- How many different types of activities are occurring - people walking, eating, playing baseball, chess, relaxing, reading?
- Which parts of the space are used and which are not?
- Are there choices of things to do?
- Is there a management presence, or can you identify anyone is in charge of the space? .

M. Veronica Gandha - Workshop RECAKA –ADW 2021



Jay Pritzker Pavilion – MILLENNIUM PARK – CHICAGO – Frank Gehry Workshop RECAKA –ADW 2021



SOCIABILITY

Questions to consider on sociability:

- Is this a place where you would choose to meet your friends? Are others meeting friends here or running into them?
- Are people in groups? Are they talking with one another?
- Do people seem to know each other by face or by name?
- Do people bring their friends and relatives to see the place or do they point to one of its features with pride?
- Are people smiling? Do people make eye contact with each other?
- Do people use the place regularly and by choice?
- Does a mix of ages and ethnic groups that generally reflect the community at large?
- Do people tend to pick up litter when they see it?

M. Veronica Gandha - Workshop RECAKA -ADW 2021



Jay Pritzker Pavilion – MILLENNIUM PARK – CHICAGO – Frank Gehry

M. Veronica Gandha - Workshop RECAKA –ADW 2021



SELIG-JOSEPH-FOLZ THEATER, KADISH PARK - Pro-bono Performance Space - HGA

M. Veronica Gandha - Workshop RECAKA –ADW 2021

HGA

Empathy

Curiosity

Hard work

Originality

Legacy

OUR VALUES

Empathy

Empathy is understanding and being sensitive to others' perspectives—both internally with our colleagues and externally with our clients.

AirBubble Playground
- ecoLogicStudio



M. Veronica Gandha - Workshop RECAKA -ADW 2021



The playground integrates the Photo. Synthetica technology for the advanced integration of photosynthesis in the built environment.

AirBubble creates a purified microclimate for children to play in, a true bubble of clean air in the centre of Warsaw (Poland)

M. Veronica Gandha - Workshop RECAKA –ADW 2021

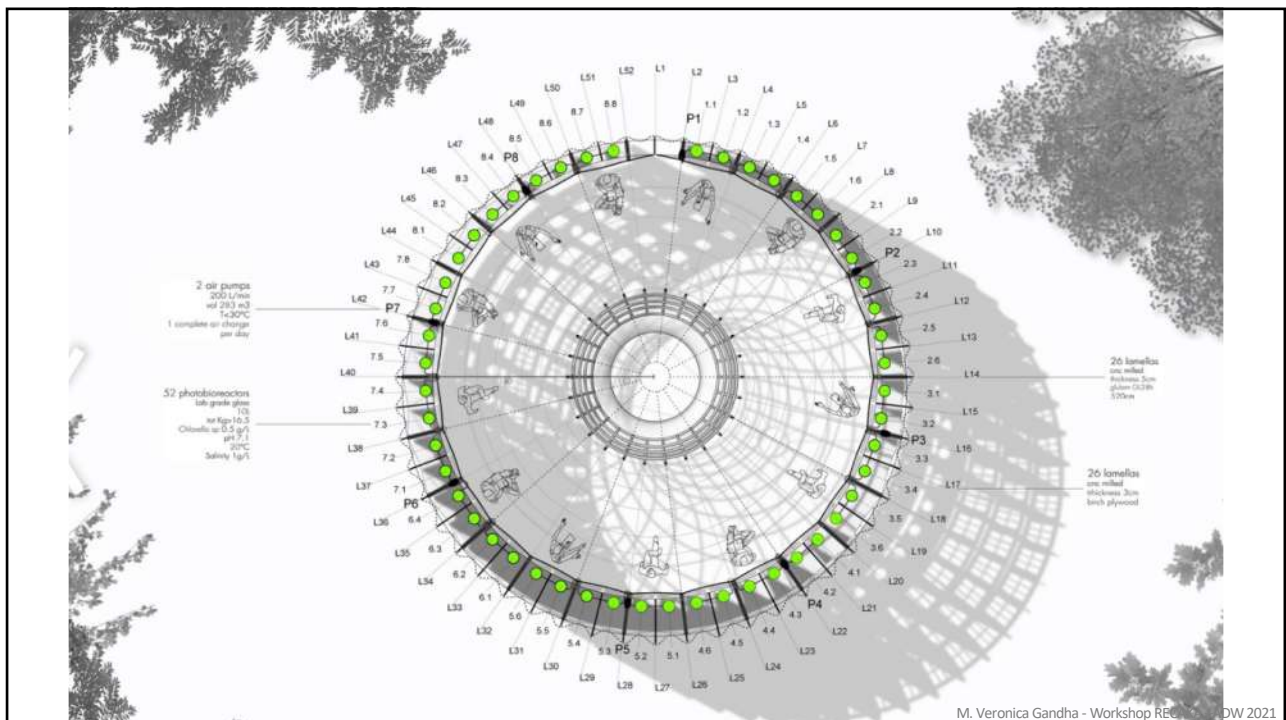


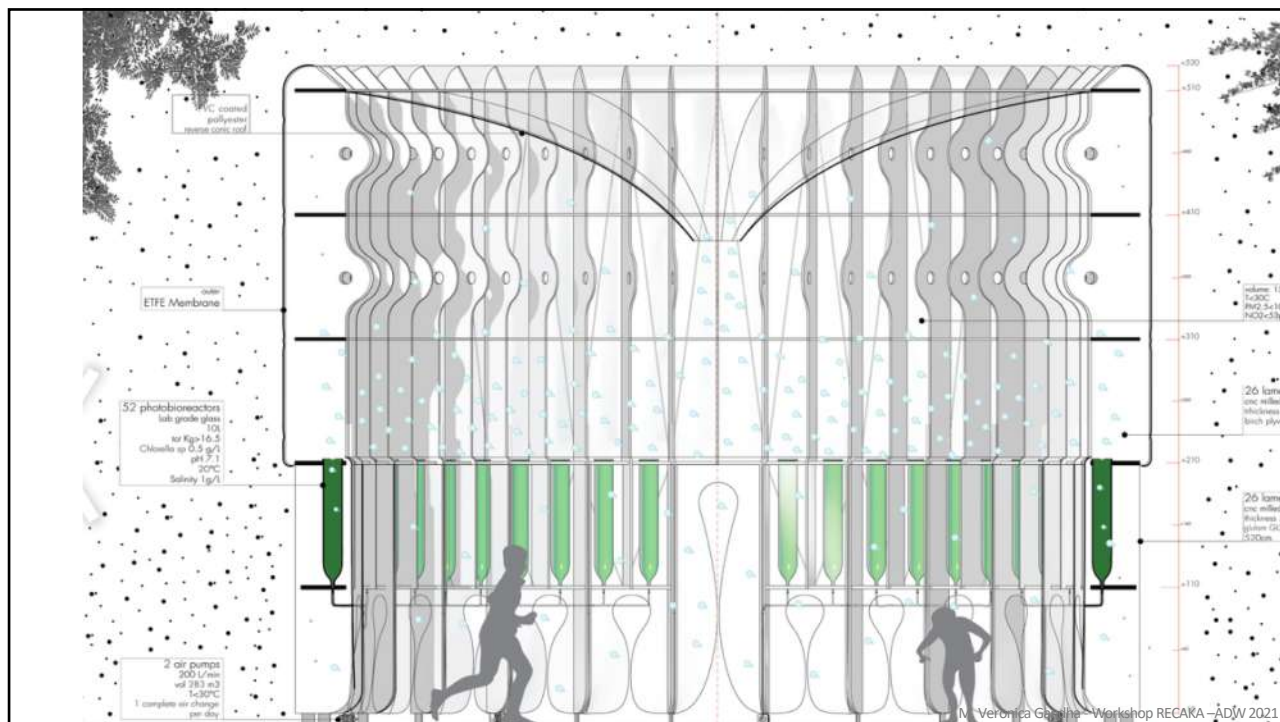
M. Veronica Gandha - Workshop RECAKA –ADW 2021

The filtering process is enhanced by the architectural morphology of the playground structure. The ETFE membrane – an evolution of the PhotoSynthetica urban curtain system presented in Dublin in 2018 by ecoLogicStudio – controls the microclimate inside AirBubble.



cylindrical timber structure wrapped in an ETFE membrane protecting 52 glass algae reactors. This creates a real urban algae greenhouse.





The Chu Hai College - OMA





W(ego) Futuristic Hotel

Dutch Design Week 2017
- MVRDV

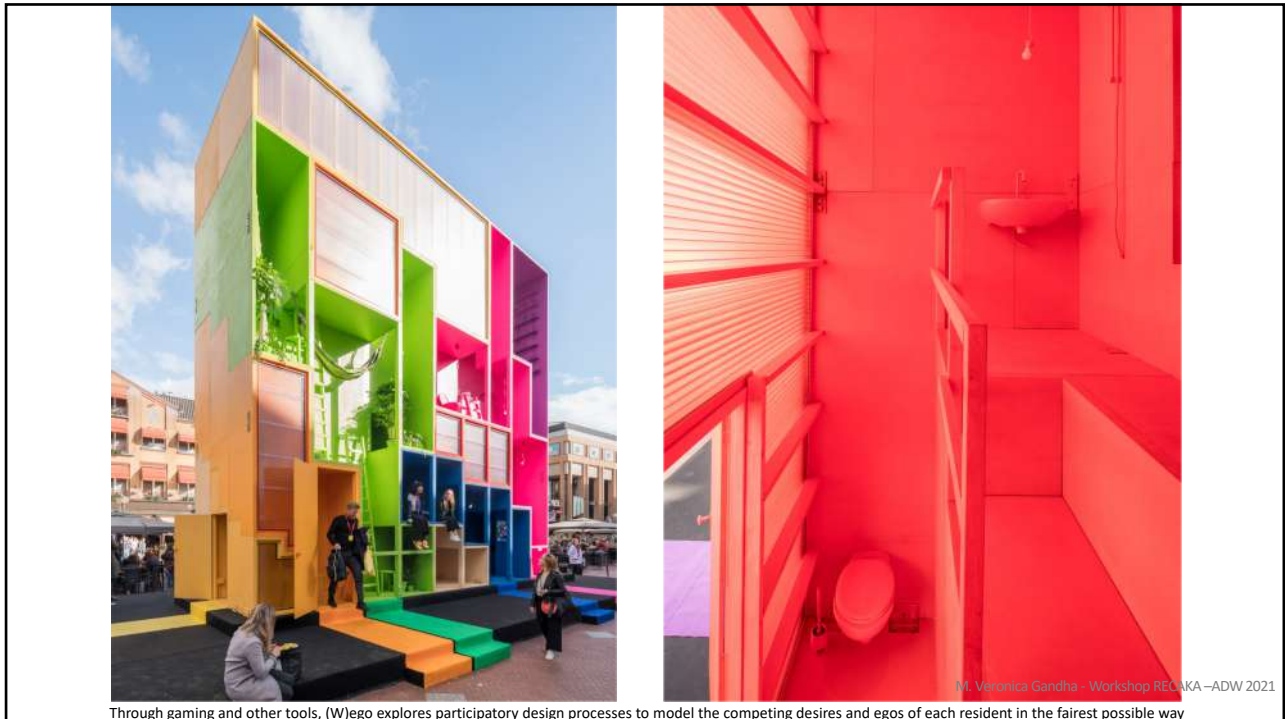


M. Veronica Gandha - Workshop RECAKA -ADW 2021



M. Veronica Gandha - Workshop RECAKA -ADW 2021

(W)ego is a concept for accommodation that can adapt to the different needs of any future inhabitants – whether they be families, students or refugees.



Through gaming and other tools, (W)ego explores participatory design processes to model the competing desires and egos of each resident in the fairest possible way



ENJOY ... and Dare to have BIG DREAMs

M. Veronica Gandha - Workshop RECAKA –ADW 2021