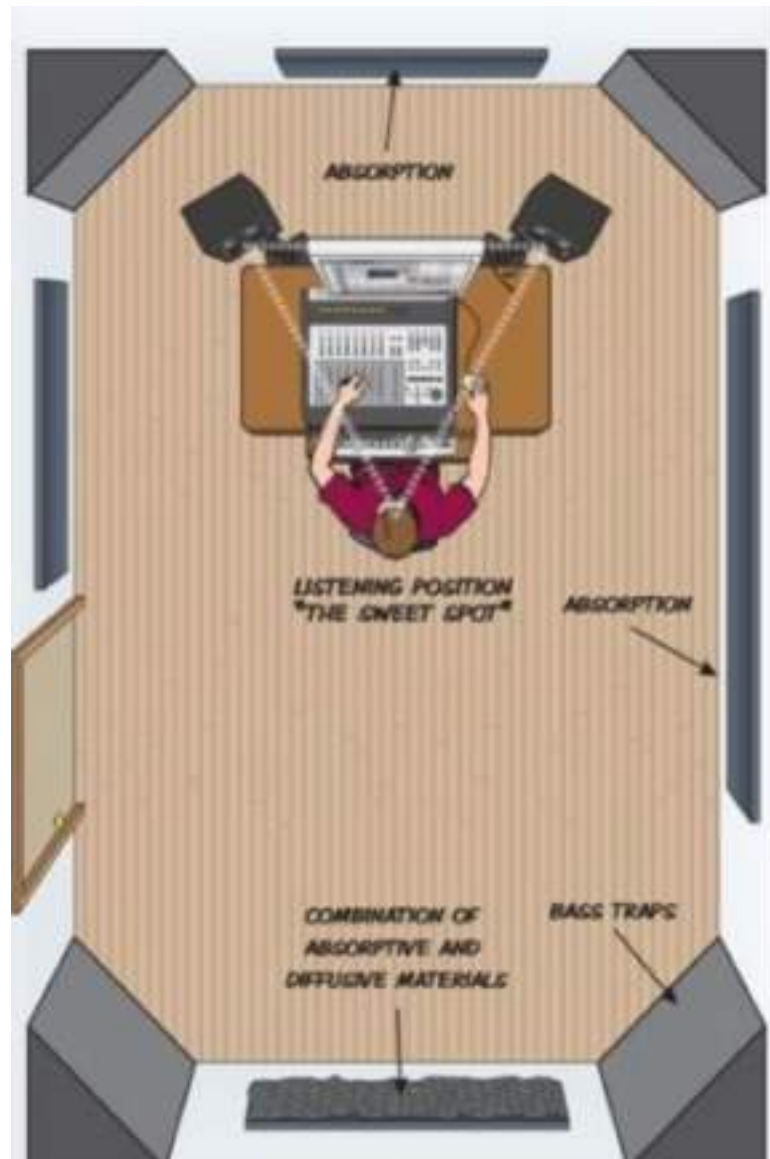


Recording Studio Room

Santa Ursula Jakarta

2022

Image references





Floor

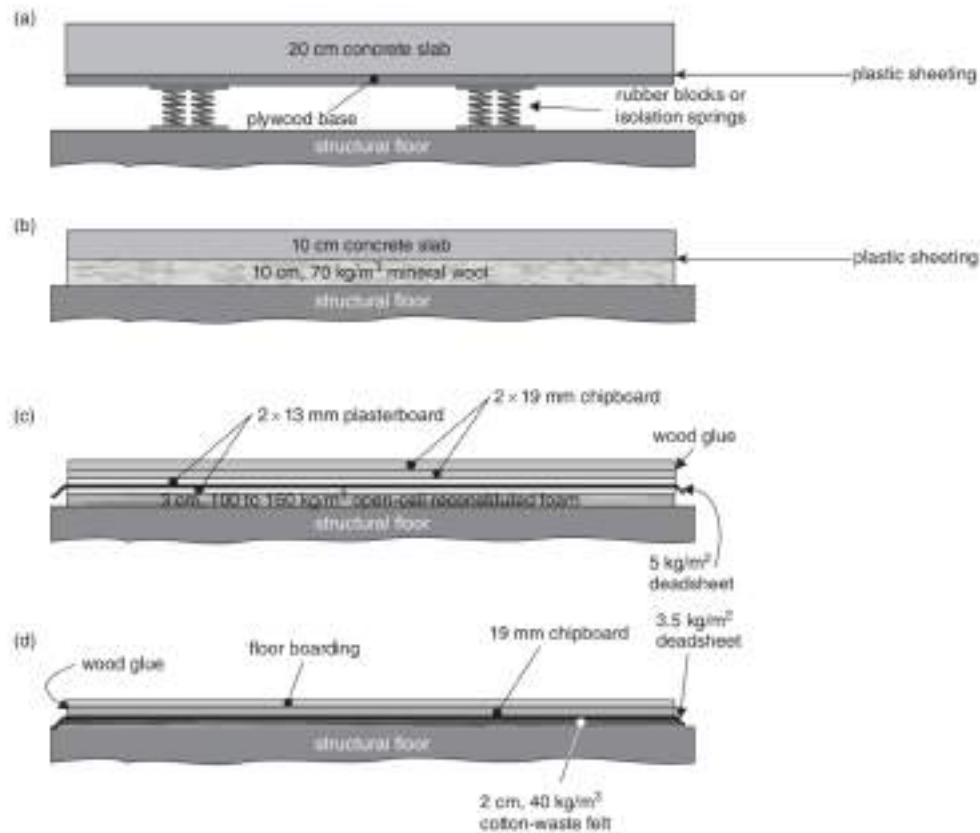


Figure 3.4: A selection of different floor-floating options.

Wall

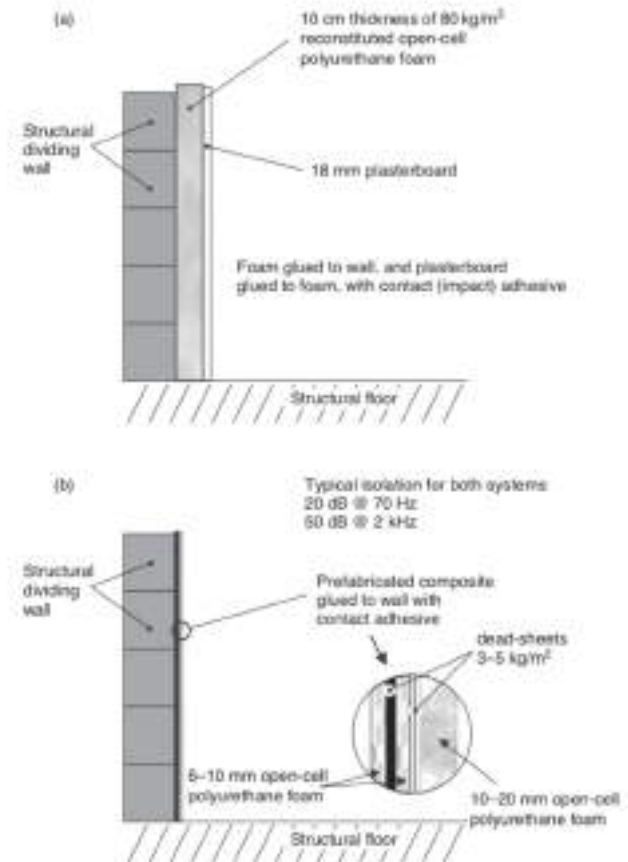


Figure 3.3: Isolation treatments for direct application to walls: (a) With reflective surface to room; (b) With absorbent surface to room. Typical isolation for both systems: 20 dB at 70 Hz; 50 dB at 2 kHz.

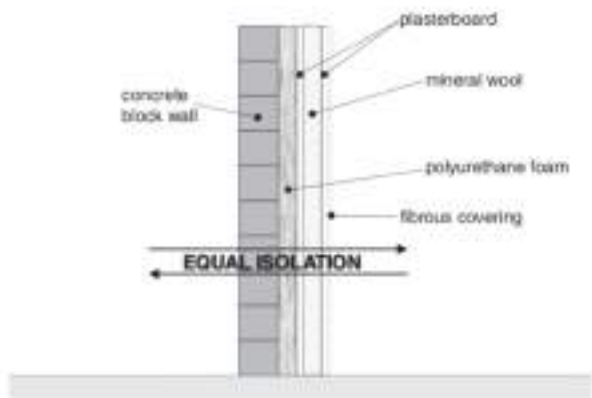


Figure 3.15: Non-directionality of airborne sound isolation. Despite the asymmetric distribution of the materials, the isolation for airborne sounds will be equal in either direction.

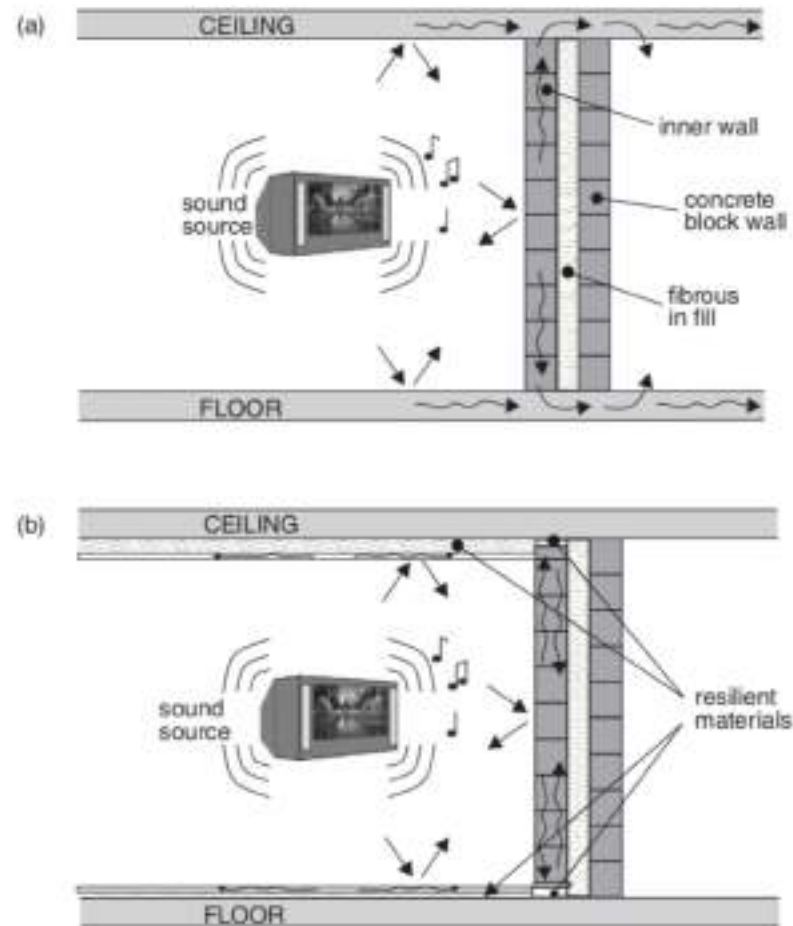
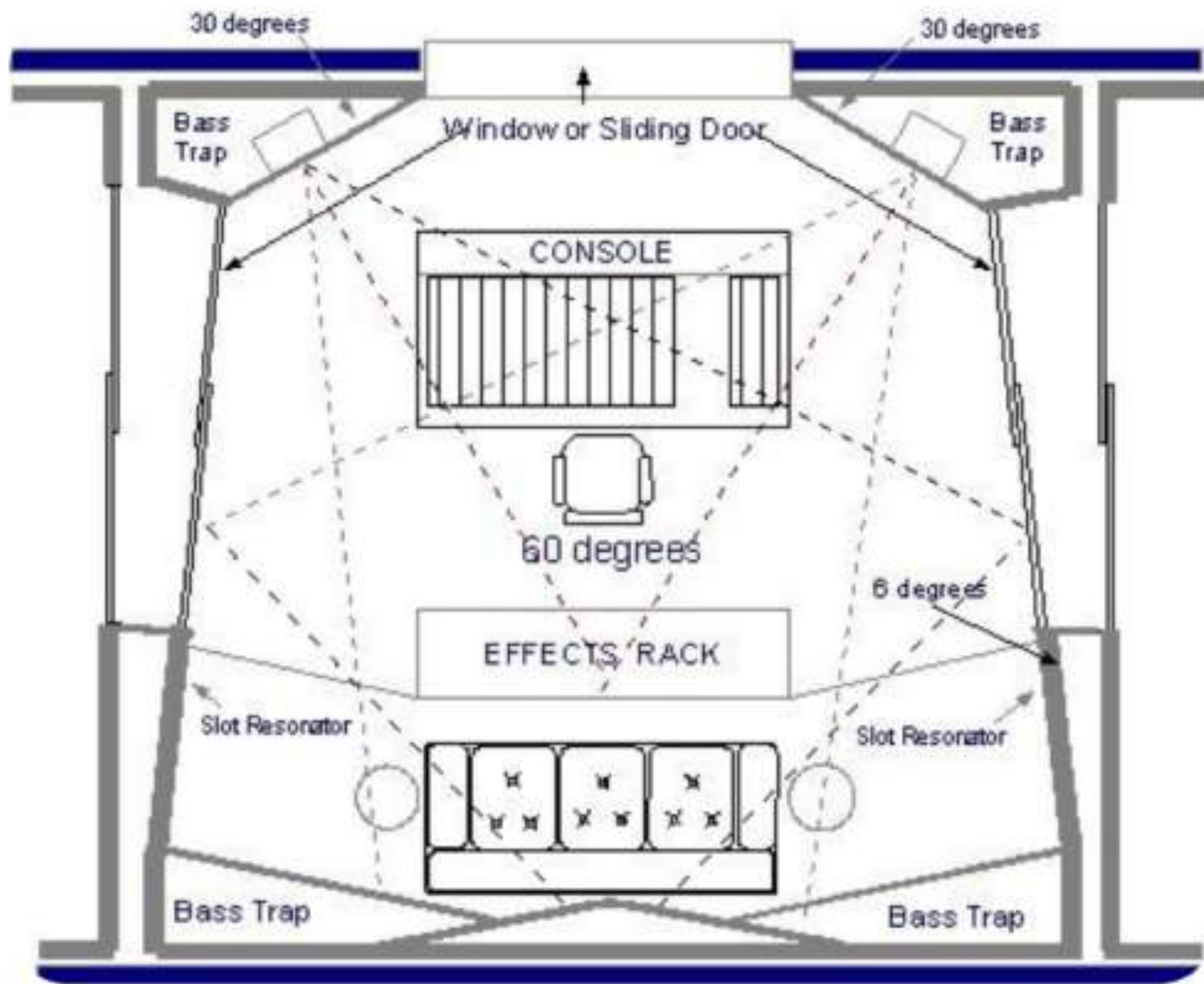
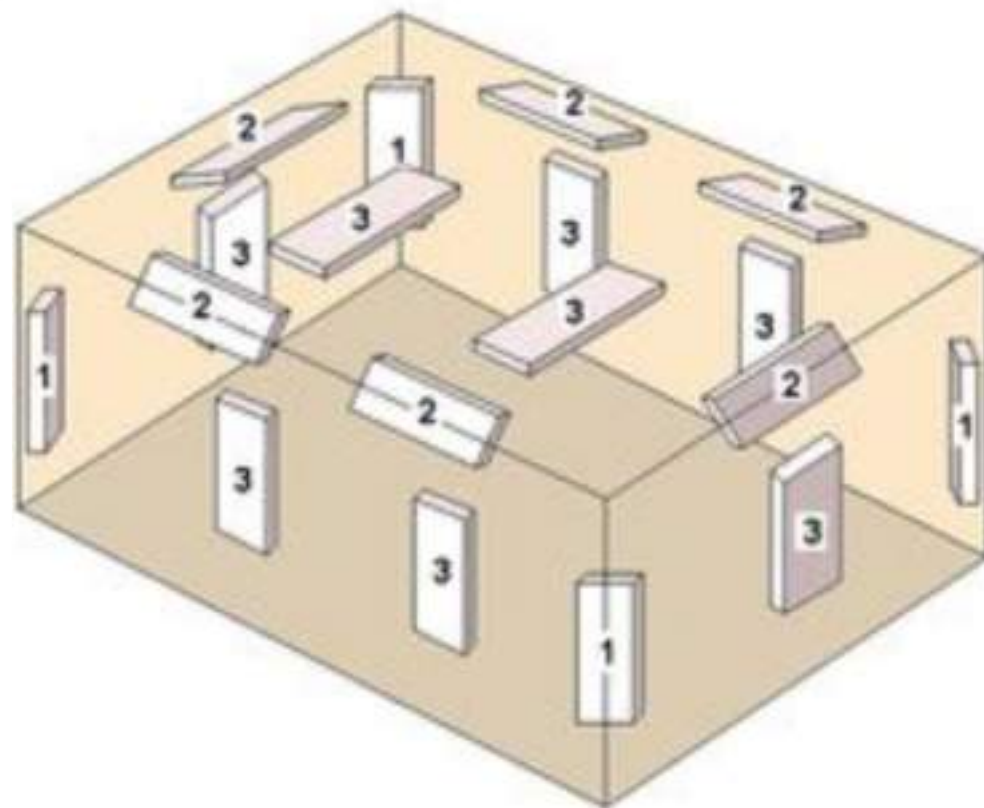
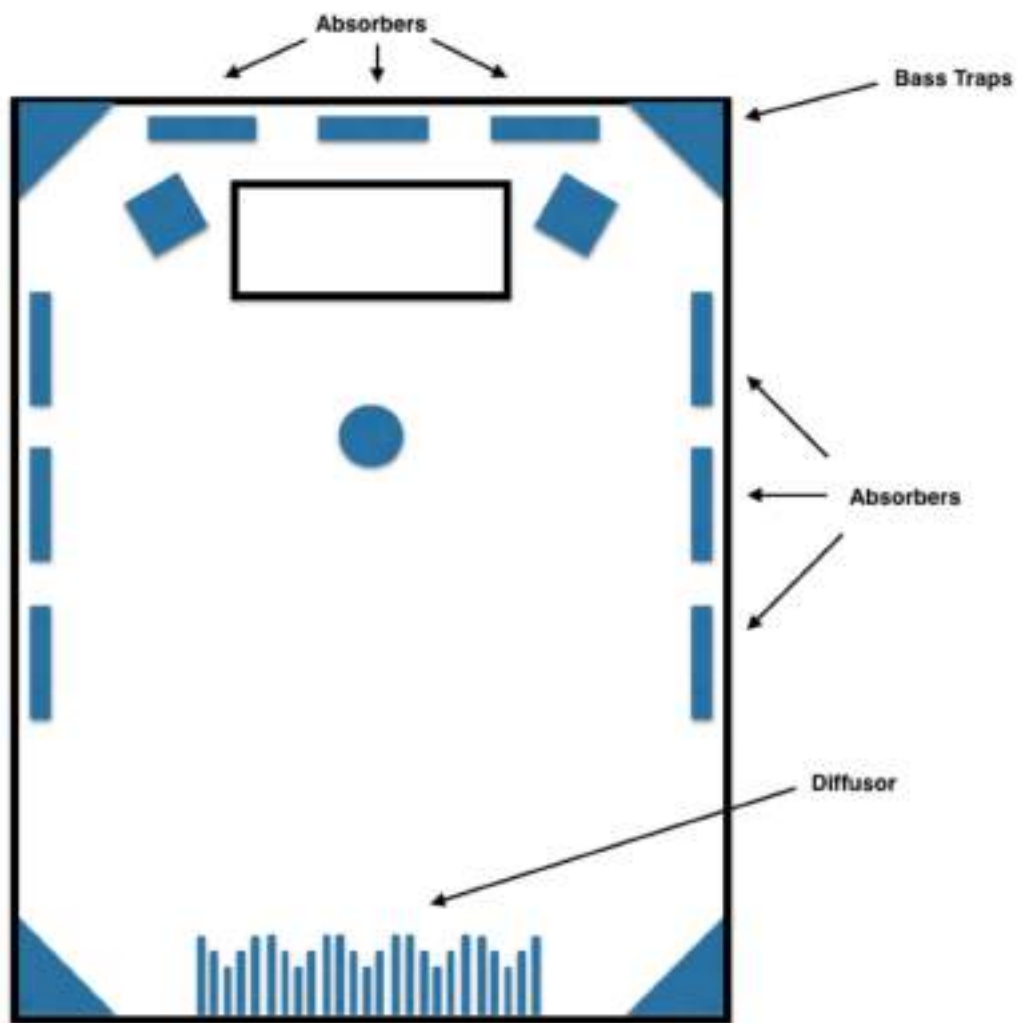
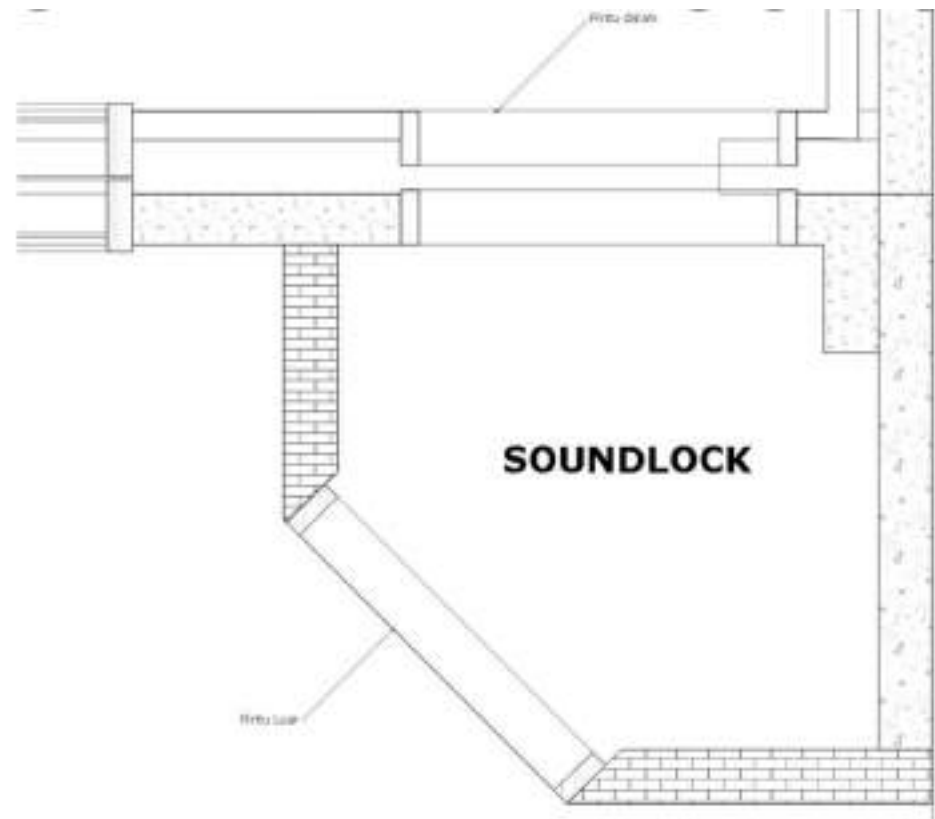


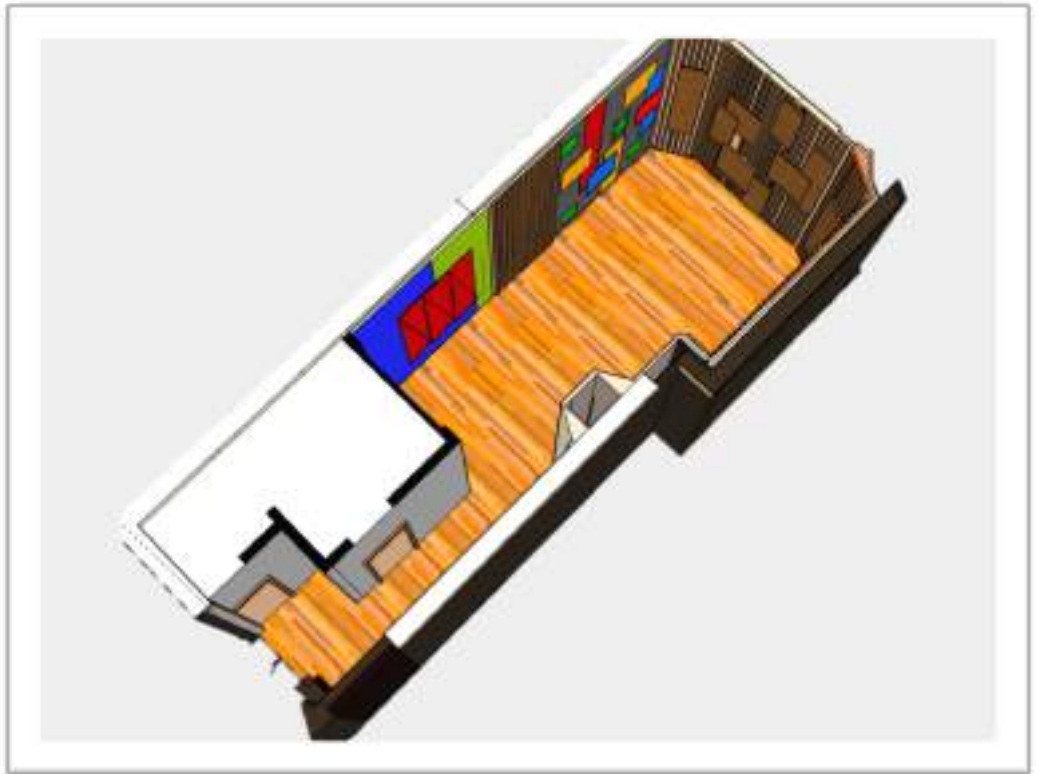
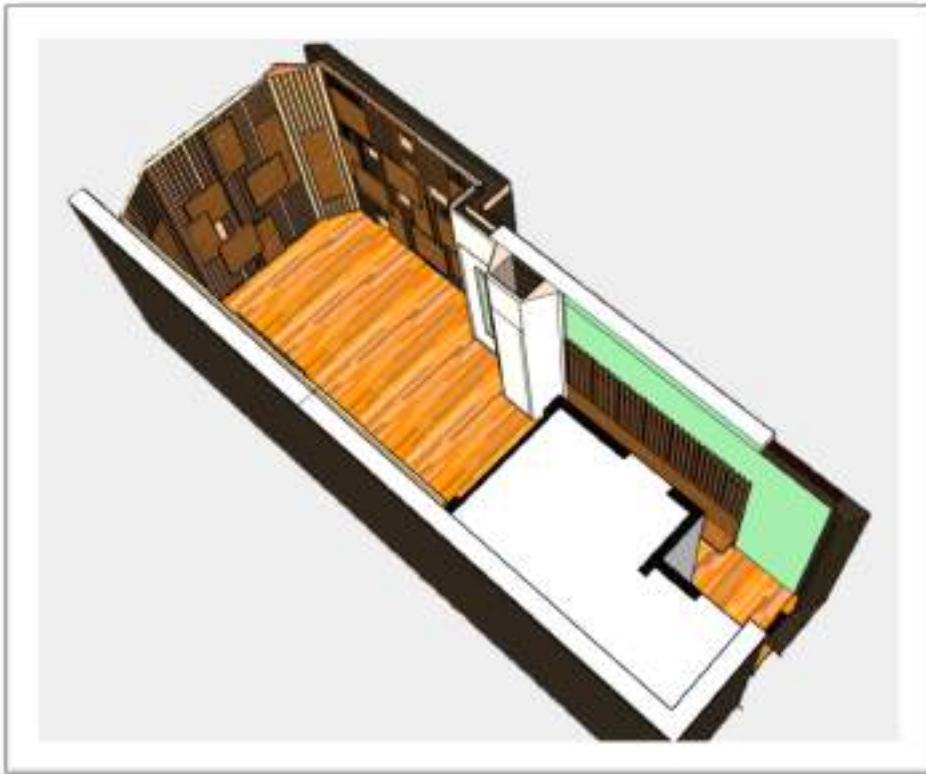
Figure 3.13: The benefits of floating surfaces: (a) The addition of an inner wall to aid isolation between the rooms can be largely ineffective if flanking transmission via the floor and ceiling pass round it; (b) Protecting the floor and ceiling from direct sound, plus floating the inner wall away from the structural walls, floor and ceiling, can greatly reduce the amount of sound passed to the neighbouring rooms.



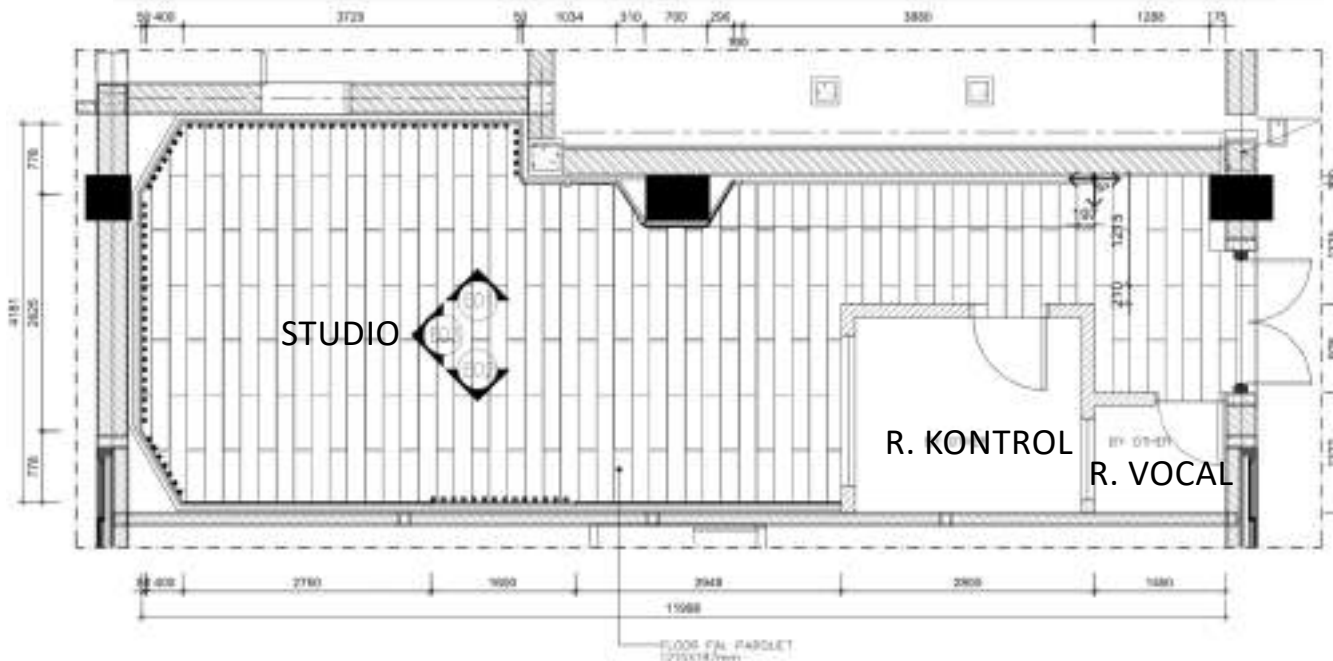
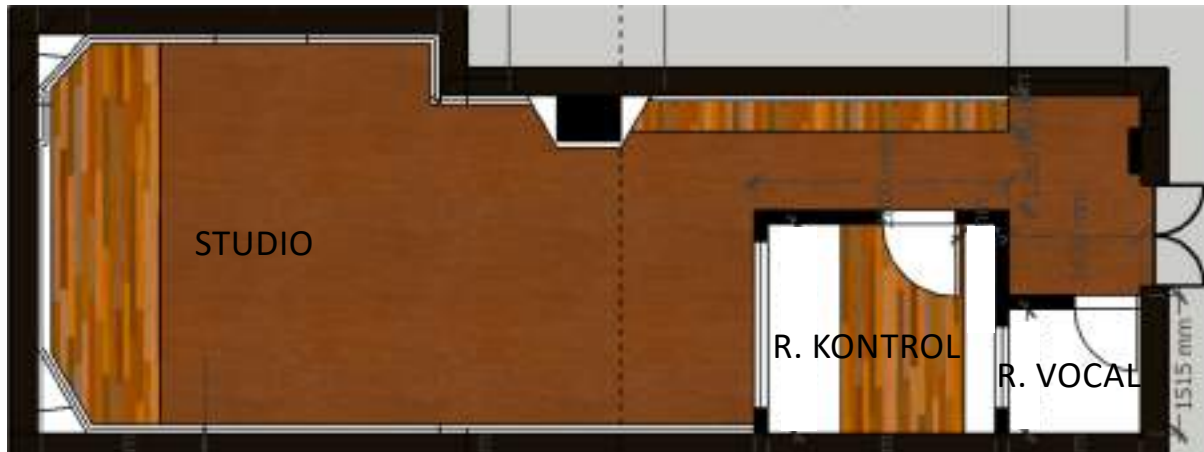




DESAIN PROPOSAL - Santa Ursula Jakarta



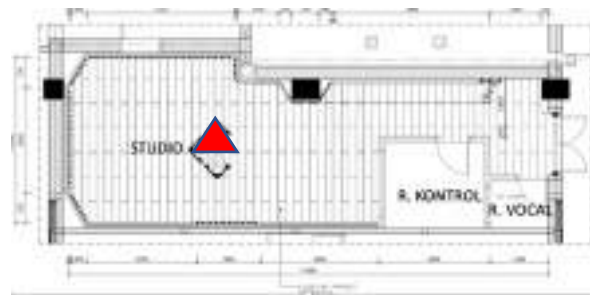
PERSPEKTIF
STUDIO



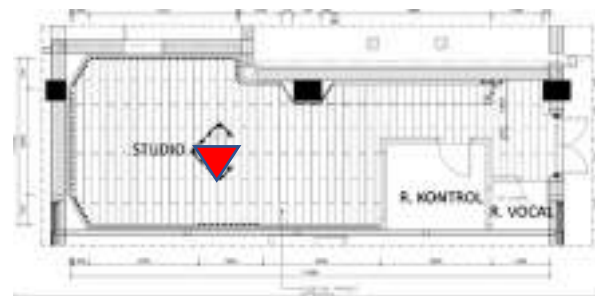
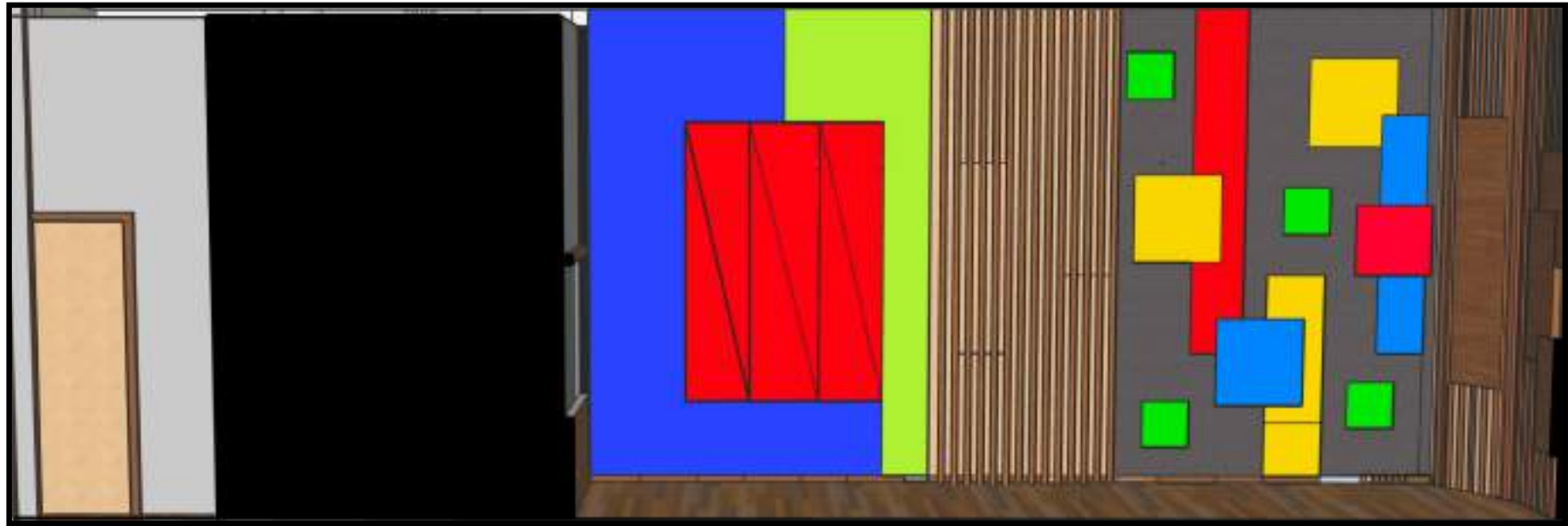
DENAH
STUDIO



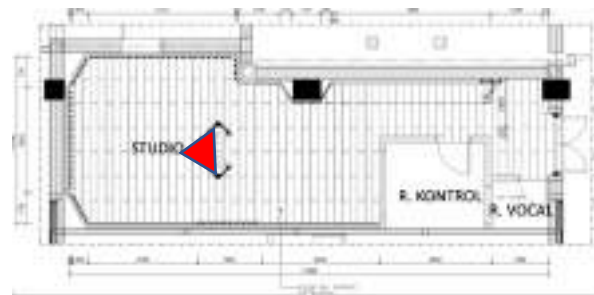
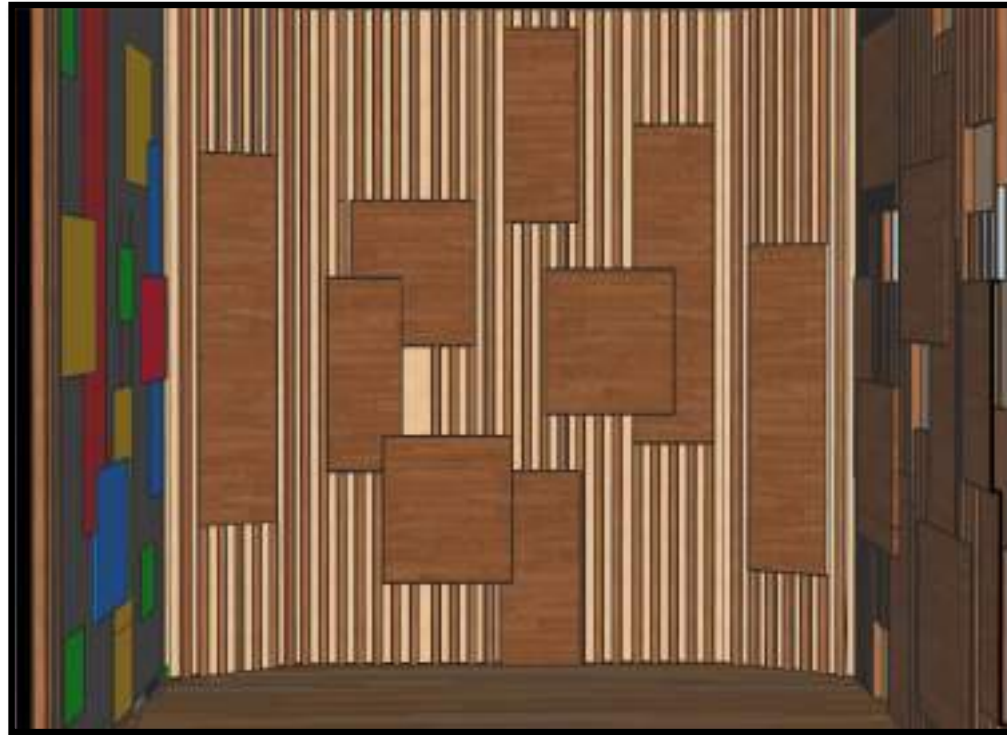
TAMPAK BO4
STUDIO



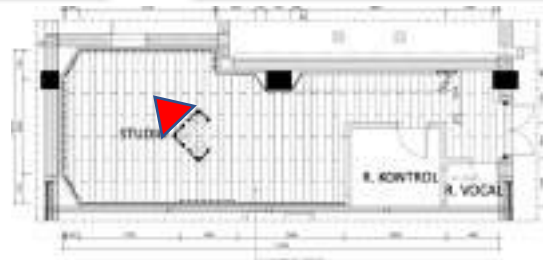
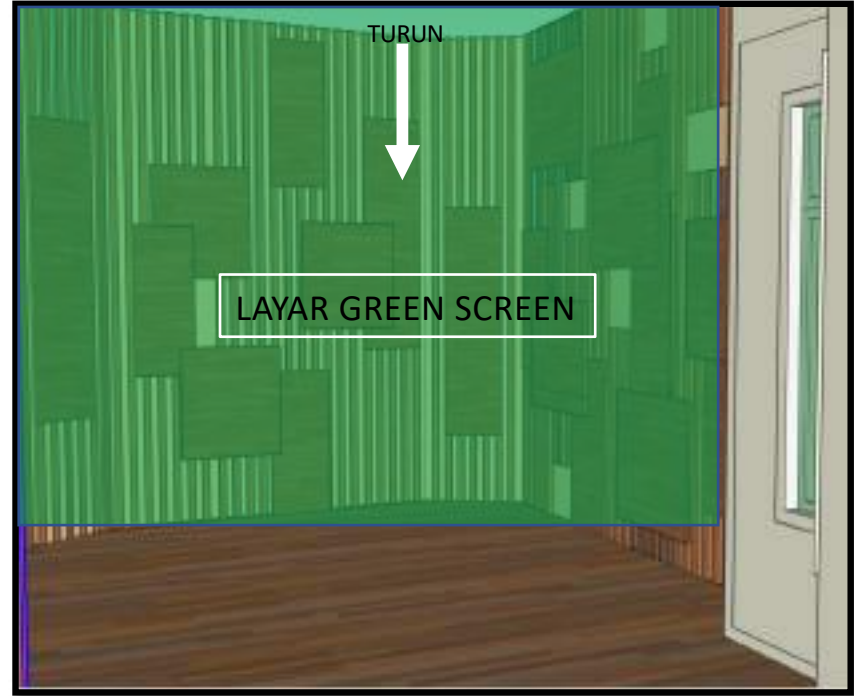
TAMPAK BO1
STUDIO



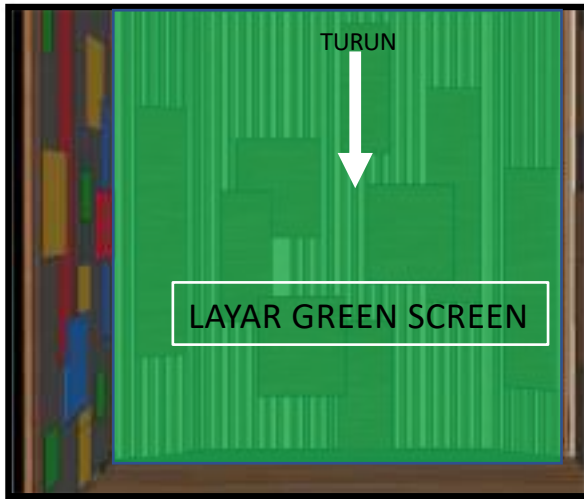
TAMPAK BO2
STUDIO



TAMPAK B03
STUDIO



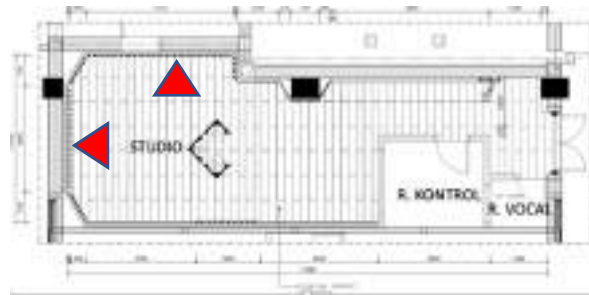
TAMPAK
DIAGONAL
STUDIO

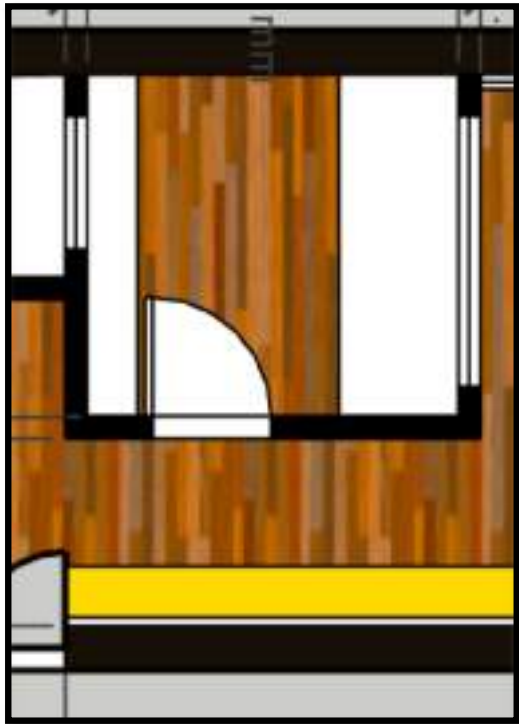


TAMPAK B03
STUDIO



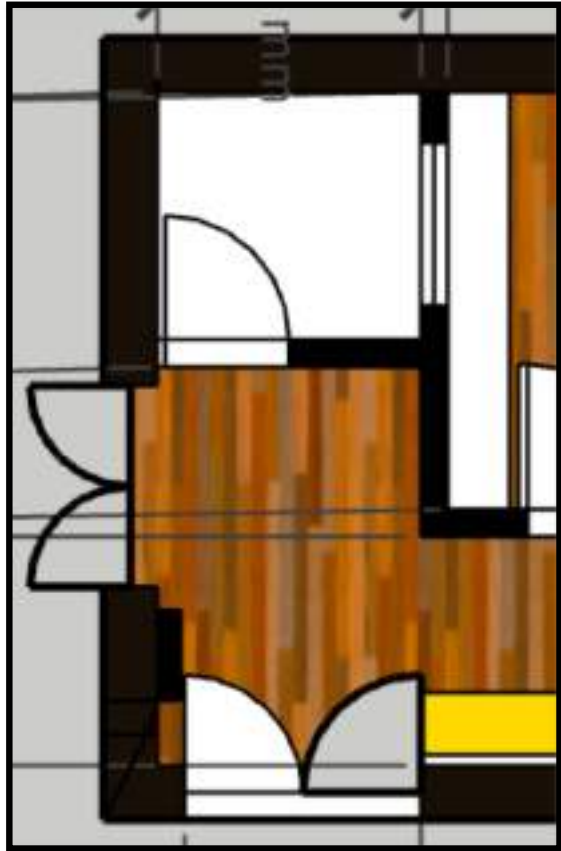
TAMPAK B01
STUDIO





RUANG
KONTROL





STUDIO
VOKAL