



ICCIM

THE SECOND INTERNATIONAL CONFERENCE OF CONSTRUCTION, INFRASTRUCTURE, AND MATERIALS

CERTIFICATE

IS PROUDLY PRESENTED TO

Aniek Prihatiningsih

IN RECOGNITION OF VALUABLE CONTRIBUTION AS
THE AUTHOR OF

**Analysis of Diaphragm Wall Stability with
Dewatering and Ground Freezing Treatment**

26th July 2021
Universitas Tarumanagara
Jakarta - Indonesia

Dean of the Faculty of Engineering
Universitas Tarumanagara

Harto Tanujaya, S.T., M.T., Ph.D.



Lecture Notes in Civil Engineering

Han Ay Lie · Monty Sutrisna ·
Joewono Prasetijo ·
Bonaventura H.W. Hadikusumo ·
Leksmono Suryo Putranto *Editors*

Proceedings of the Second International Conference of Construction, Infrastructure, and Materials

ICCIM 2021, 26 July 2021, Jakarta,
Indonesia

Lecture Notes in Civil Engineering

Volume 216

Series Editors

Marco di Prisco, Politecnico di Milano, Milano, Italy

Sheng-Hong Chen, School of Water Resources and Hydropower Engineering,
Wuhan University, Wuhan, China

Ioannis Vayas, Institute of Steel Structures, National Technical University of
Athens, Athens, Greece

Sanjay Kumar Shukla, School of Engineering, Edith Cowan University, Joondalup,
WA, Australia

Anuj Sharma, Iowa State University, Ames, IA, USA

Nagesh Kumar, Department of Civil Engineering, Indian Institute of Science
Bangalore, Bengaluru, Karnataka, India

Chien Ming Wang, School of Civil Engineering, The University of Queensland,
Brisbane, QLD, Australia

Lecture Notes in Civil Engineering (LNCE) publishes the latest developments in Civil Engineering—quickly, informally and in top quality. Though original research reported in proceedings and post-proceedings represents the core of LNCE, edited volumes of exceptionally high quality and interest may also be considered for publication. Volumes published in LNCE embrace all aspects and subfields of, as well as new challenges in, Civil Engineering. Topics in the series include:

- Construction and Structural Mechanics
- Building Materials
- Concrete, Steel and Timber Structures
- Geotechnical Engineering
- Earthquake Engineering
- Coastal Engineering
- Ocean and Offshore Engineering; Ships and Floating Structures
- Hydraulics, Hydrology and Water Resources Engineering
- Environmental Engineering and Sustainability
- Structural Health and Monitoring
- Surveying and Geographical Information Systems
- Indoor Environments
- Transportation and Traffic
- Risk Analysis
- Safety and Security

To submit a proposal or request further information, please contact the appropriate Springer Editor:

- Pierpaolo Riva at pierpaolo.riva@springer.com (Europe and Americas);
- Swati Meherishi at swati.meherishi@springer.com (Asia - except China, and Australia, New Zealand);
- Wayne Hu at wayne.hu@springer.com (China).

All books in the series now indexed by Scopus and EI Compindex database!

More information about this series at <https://link.springer.com/bookseries/15087>

Han Ay Lie · Monty Sutrisna ·
Joewono Prasetijo ·
Bonaventura H.W. Hadikusumo ·
Leksmono Suryo Putranto
Editors


Proceedings of the Second International Conference of Construction, Infrastructure, and Materials

ICCIM 2021, 26 July 2021, Jakarta, Indonesia


Editors

Han Ay Lie 
Department of Civil Engineering
Diponegoro University
Semarang, Indonesia

Monty Sutrisna 
School of Built Environment
Massey University
Auckland, New Zealand

Joewono Prasetyo 
Department of Transportation Engineering
Technology
Universiti Tun Hussein Onn Malaysia
Panchor, Malaysia

Bonaventura H.W. Hadikusumo
Department of Construction, Engineering
and Infrastructure Management
Asian Institute of Technology
Klong Luang, Thailand

Leksmono Suryo Putranto 
Civil Engineering Department
Universitas Tarumanagara
Jakarta Barat, Indonesia

ISSN 2366-2557

ISSN 2366-2565 (electronic)

Lecture Notes in Civil Engineering

ISBN 978-981-16-7948-3

ISBN 978-981-16-7949-0 (eBook)

<https://doi.org/10.1007/978-981-16-7949-0>

© The Editor(s) (if applicable) and The Author(s), under exclusive license to Springer Nature Singapore Pte Ltd. 2022

This work is subject to copyright. All rights are solely and exclusively licensed by the Publisher, whether the whole or part of the material is concerned, specifically the rights of translation, reprinting, reuse of illustrations, recitation, broadcasting, reproduction on microfilms or in any other physical way, and transmission or information storage and retrieval, electronic adaptation, computer software, or by similar or dissimilar methodology now known or hereafter developed.

The use of general descriptive names, registered names, trademarks, service marks, etc. in this publication does not imply, even in the absence of a specific statement, that such names are exempt from the relevant protective laws and regulations and therefore free for general use.

The publisher, the authors and the editors are safe to assume that the advice and information in this book are believed to be true and accurate at the date of publication. Neither the publisher nor the authors or the editors give a warranty, expressed or implied, with respect to the material contained herein or for any errors or omissions that may have been made. The publisher remains neutral with regard to jurisdictional claims in published maps and institutional affiliations.

This Springer imprint is published by the registered company Springer Nature Singapore Pte Ltd. The registered company address is: 152 Beach Road, #21-01/04 Gateway East, Singapore 189721, Singapore

Organization

Steering Committee

Prof. Han Ay Lie, Diponegoro University, Indonesia
Prof. Buntara Sthenly Gan, Nihon University, Japan
Dr. Najid, Universitas Tarumanagara, Indonesia
Dr. Widodo Kushartomo, Universitas Tarumanagara, Indonesia

International Scientific Committee

Prof. Leksmono Suryo Putranto, Universitas Tarumanagara, Indonesia
Prof. Buntara Sthenly Gan, Nihon University, Japan
Dr. Dimas Bayu Endrayana Dharmowijoyo, Universiti Teknologi Petronas, Malaysia
Dr. Bashar S. Mohammed, Universiti Teknologi Petronas, Malaysia
Dr. Andri Setiawan, Ecole Polytechnique Federale de Lausanne, Switzerland
Dr. Fadhilah Muslim, Universitas Indonesia, Indonesia; Technical University of Munich, Germany
Prof. Han Ay Lie, Universitas Diponegoro, Indonesia
Prof. Chaidir Anwar Makarim, Universitas Tarumanagara, Indonesia
Prof. Dewa Made Priyantha Wedagama, Universitas Udayana, Indonesia
Prof. Sofyan M. Saleh, Universitas Syiah Kuala, Indonesia
Prof. Eng. Joni Arliansyah, Universitas Sriwijaya, Indonesia
Prof. Sakti Adji Adisasmita, Universitas Hassanuddin, Indonesia
Prof. Siti Malkhamah, Universitas Gadjah Mada, Indonesia
Prof. Krishna Mochtar, Institut Teknologi Indonesia, Indonesia

Prof. Ade Sjafruddin, Institut Teknologi Bandung, Indonesia
Prof. Ludfi Djakfar, Universitas Brawijaya, Indonesia
Prof. Wimpy Santosa, Universitas Parahyangan, Indonesia
Prof. Antonius, Universitas Islam Sultan Agung, Indonesia
Prof. Erika Buchari, Universitas Sriwijaya, Indonesia
Prof. Ria Asih Aryani Soemitro, Institut Teknologi Sepuluh November, Indonesia
Prof. I Nyoman Arya Thanaya, Universitas Udayana, Indonesia
Dr. Hermawan, Universitas Katolik Soegijapranata, Indonesia
Dr. Maria Wahyuni, Universitas Katolik Soegijapranata, Indonesia
Dr. Djoko Suwarno, Universitas Katolik Soegijapranata, Indonesia
Dr. Bayu Martanto Adji, Universitas Andalas, Indonesia
Dr. Aine Kusumawati, Institut Teknologi Bandung, Indonesia
Dr. Bagus Hario Setiadji, Universitas Diponegoro, Indonesia
Dr. Basuki Anondho, Universitas Tarumanagara, Indonesia
Dr. Widodo Kushartomo, Universitas Tarumanagara, Indonesia
Dr. Najid, Universitas Tarumangara, Indonesia
Dr. Dewanti Marsoyo, Universitas Gadjah Mada, Indonesia
Dr. Wati A. Pranoto, Universitas Tarumanagara, Indonesia
Dr. Noor Mahmudah, Universitas Muhammadiyah Yogyakarta, Indonesia
Dr. Eng. Muhammad Isran Ramli, Universitas Hassanuddin, Indonesia
Dr. Eng. Imam Muthohar, Universitas Gadjah Mada, Indonesia
Dr. Achmad Wicaksono, Universitas Brawijaya, Indonesia
Dr. Caroline A. Sutandi, Universitas Parahyangan, Indonesia
Dr. Hera Widyastuti, Institut Teknologi Sepuluh November, Indonesia
Dr. R. Sony Sulaksono Wibowo, Institut Teknologi Bandung, Indonesia
Dr. Resdiansyah, Universitas Pembangunan Jaya, Indonesia
Dr. Yosritzal, Universitas Andalas, Indonesia
Dr. M. Asad Abdurrahman, Universitas Hassanuddin, Indonesia
Dr. Eng. M. Zudhy Irawan, Universitas Gadjah Mada, Indonesia
Dr. Ir. Hitapriya Suprayitno, M.Eng., Institut Teknologi Sepuluh November, Indonesia
Dr. Ani Hairani, Universitas Muhammadiyah Yogyakarta, Indonesia
Dr. Hendy Setiawan, Universitas Gadjah Mada, Indonesia
Dr. Alfred Jonathan Susilo, Universitas Tarumanagara, Indonesia
Dr. Aksan Kawanda, Universitas Trisakti, Indonesia
Dr. Nurul Fajar Januriyadi, Universitas Pertamina, Indonesia
Dr. Neil Andika, Universitas Gadjah Mada, Indonesia
Dr. Faizal Immaddudin Wira Rohmat, Institut Teknologi Bandung, Indonesia
Dr. Usman Wijaya, Universitas Kristen Krida Wacana, Indonesia
Dr. Leni Sagita Riantini, Universitas Indonesia, Indonesia
Dr. Hendrik Sulistio, Universitas Tarumanagara, Indonesia
Dr. Jane Sekarsari, Universitas Trisakti, Indonesia

Local Organizing Committee

Chairman

Prof. Chaidir Anwar Makarim, Universitas Tarumanagara, Indonesia

Vice Chairwoman

Anissa Noor Tajudin, Universitas Tarumanagara, Indonesia

Members

Prof. Leksmono Suryo Putranto, Universitas Tarumanagara, Indonesia

Yenny Untari, Universitas Tarumanagara, Indonesia

Dewi Linggasari, Universitas Tarumanagara, Indonesia

Vittorio Kurniawan, Universitas Tarumanagara, Indonesia

Aniek Prihatiningsih, Universitas Tarumanagara, Indonesia

Arif Sandjaya, Universitas Tarumanagara, Indonesia

Abdul Roji, Universitas Tarumanagara, Indonesia

Slamet Riyadi, Universitas Tarumanagara, Indonesia

Daniel Christianto, Universitas Tarumanagara, Indonesia

Arianti Sutandi, Universitas Tarumanagara, Indonesia

Ni Luh Putu Shinta Eka Setyarini, Universitas Tarumanagara, Indonesia

Anugerah Tiffanyputri, Universitas Tarumanagara, Indonesia

Matthew Ephraim, Universitas Tarumanagara, Indonesia

Saskia Calysta Zetira, Universitas Tarumanagara, Indonesia

Channy Saka, Universitas Tarumanagara, Indonesia

Jessica Clarita, Universitas Tarumanagara, Indonesia

Prem Singh, Universitas Tarumanagara, Indonesia

Federick Luanga, Universitas Tarumanagara, Indonesia

Preface

This new volume of Lecture Notes in Civil Engineering contains the proceedings of the Second International Conference of Construction, Infrastructure, and Materials (ICCIM 2021). This book presents the latest development in civil engineering on a global scale. It highlights the conference scopes, such as Structural Engineering, Construction Materials, Geotechnical Engineering, Transportation System and Engineering, Constructions Management, Water Resources Engineering, and Infrastructure Development. The 55 articles published in this book went through peer-review processes double-blindly and plagiarism check. Manuscript assessments by the expert reviewers were based on the organizer's technical criteria, including technical criteria, quality criteria, and presentation criteria.

The Second International Conference of Construction, Infrastructure, and Materials (ICCIM 2021) was hosted by the Civil Engineering Undergraduate Study Program of Universitas Tarumanagara, Indonesia, on 26 July 2021. The conference brought together national and international experts to share their researches, knowledge, and experiences. ICCIM 2021 carried the theme "Research and Technology in Civil Engineering to Enhance the Sustainability of the Built Environment".

Due to the global COVID-19 pandemic, which has impacted all activities globally, ICCIM 2021 was held as an online conference. ICCIM 2021 online conference aimed to capture a broader range of participants. The Conference was also expected to facilitate researchers, practitioners, and students in their respective fields of expertise to share information and exchange ideas about the current state of civil engineering development.

ICCIM 2021 was supported by Massey University, New Zealand; Universiti Tun Hussein Onn Malaysia, Malaysia; Nihon University, Japan; fib Indonesia; Diponegoro University, Indonesia; Soegijapranata Catholic University, Indonesia; Universitas Sebelas Maret, Indonesia; and Universitas Atma Jaya Yogyakarta, Indonesia.

ICCIM 2021 has received papers from various countries, such as Indonesia, Japan, Thailand, the United Kingdom, the United States of America, the

Philippines, India, Nigeria, and Bangladesh. More than 600 researchers, practitioners, and students from all over the world registered to attend the Conference.

We are likewise grateful to the keynote speakers for bringing the exciting topics to ICCIM 2021: Prof. Roesdiman Soegiarso (Universitas Tarumanagara, Indonesia); Prof. Monty Sutrisna (Massey University, New Zealand); Dr.-Ing. Joewono Prasetijo (Universiti Tun Hussein Onn Malaysia, Malaysia); and Dr. Tam Chat Tim (National University of Singapore, Singapore).

We would also like to extend our appreciation to the supporting institutions. Secondly, thank you to the sponsors for the utmost support and kind contribution: PT. Waskita Karya (Persero) Tbk, PT. Pamapersada Nusantara, and PT. Bank Negara Indonesia Tbk.

Many people have worked very hard for the organization of this Conference. Special thanks are needed to the Organizing Committee, Steering Committee, Editorial Board, and Scientific Committee. All of whom have generously worked to make this Conference rich in content and pleasant for the attendees. We would also like to thank all the authors who have contributed to the success of this Conference.

Semarang, Indonesia
Auckland, New Zealand
Panchor, Malaysia
Klong Luang, Thailand
Jakarta Barat, Indonesia

Han Ay Lie
Monty Sutrisna
Joewono Prasetijo
Bonaventura H. W. Hadikusumo
Leksmono Suryo Putranto

Contents

Additional Horizontal Movement of the Single Pile Foundation with Combined Loads	1
Sumiyati Gunawan, Niken Silmi Surjandari, Bambang Setiawan, and Yusep Muslih Purwana	
The Combined Effects of Terraces Slope Model and Geotextile Reinforcement Design in Sendangmulyo, Wonogiri	13
Siti Nurlita Fitri and Niken Silmi Surjandari	
Erosion and Distribution of Total Suspended Sediment (TSS) Using Landsat-8 in Krueng Pase Watershed	23
Ichwana Ramli, Ashfa Achmad, Hairul Basri, and Atika Izzaty	
Shoreline Change Cause of Abrasion in Bantan District Bengkalis Island as the Outstanding Beach Area	35
H. Tampubolon	
Nonlinear Effect of Fluid–Structure Interaction Modeling in the Rock-Fill Dam Jatiluhur	49
Albert Sulaiman, Wati A. Pranoto, Tati Zera, and Mouli De Rizka Dewantoro	
Assessment of Flooding Event in the Upper Sunter Watershed, Jakarta, Indonesia	59
Anasya Arsita Laksmi, Anthony Harlly Sasono Putro, Wisnu Setia Dharma, Pungky Dharma Saputra, Nina Purwanti, and Muhammad Hamzah Fansuri	
Modeling of Flood Propagation in the Lower Citarum River Using a Coupled 1D-2D HEC-RAS Model	77
Angga Prawirakusuma, Sri Legowo Wignyo Darsono, and Arno Adi Kuntoro	

Review: Effects of Climate on the Geochemical Properties of Volcanic Rocks	85
Novi Asniar, Yusep Muslih Purwana, Niken Silmi Surjandari, and Bambang Setiawan	
Analysis of the Utilization of the Embung Klampeyan, Tlogoadi Village, Mlati District, Sleman Regency, Indonesia	93
Edy Sriyono	
Analysis of Shift Pile Foundation on Mall and Hotel Projects in Bontang, East Kalimantan	105
Nicholas Joshua and Alfred Jonathan Susilo	
Analysis of Diaphragm Wall Stability with Dewatering and Ground Freezing Treatment	117
Eduard Teja and Aniek Prihatiningsih	
Analysis of Hollow Concrete Column with CFRP Wrapping Using Finite Element Method	129
William Supardjo and Sunarjo Leman	
The Use of Fly Ash in Pervious Concrete Containing Plastic Waste Aggregate for Sustainable Green Infrastructure	141
Steve W. M. Supit and Priyono	
Artificial Aggregate Made from Expanded Polystyrene Beads Coated with Cement Kiln Dust—An Experimental Trial	153
A. P. Wibowo, M. Saidani, and M. Khorami	
Load Transfer Shear Wall to Pile Cap Modelling Partially for Group Precast Pile	165
Daud Rahmat Wiyono, Roi Milyardi, Yosafat Aji Pranata, Asriwiyanti Desiani, Ginardi Husada, and Maria Christine Sutandi	
Effect of Cement–Water Ratio on the Mechanical Properties of Reactive Powder Concrete with Marble Powder as Constituent Materials	177
Widodo Kushartomo, Henny Wiyanto, and Daniel Christianto	
Structural Analysis Using Matched Acceleration Time Histories	187
Windu Partono	
Non-linear Analysis of Steel Shear Key at Epoxy Joint	199
Khairunnisa Masturoh, Nuraziz Handika, and Heru Purnomo	
On-Field Testing of the Monolith Joint of the Full Slab on a Slab-on-Pile Bridge	213
Ahmad Zaki Risadi, Josia Irwan Rastandi, Bastian Okto Bangkit Sentosa, and Nuraziz Handika	

Seismic Design Load Comparison of Reinforced Concrete Special Moment Frame and Dual Systems Based on SNI 1726:2019	231
Suradjin Sutjipto and Indrawati Sumeru	
Analysis of Asphalt Damping Ratio on Shear Test	239
Sunarjo Leman, Maria Kevinia Sutanto, Elizabeth Ivana Harsono, Vryscilia Marcella, Anugerah Tiffanyputri, and Yuskar Lase	
Analysis of the Sand Grains Influence on Damping Ratio Using Shear Test	247
Daniel Christianto, Vryscilia Marcella, Channy Saka, Alvira Nathania Tanika, and Yuskar Lase	
Parametric Study on Neutral Axis Growth of Concrete Beams Reinforced with Fiber-Reinforced Polymer and Steel Bars	255
Ahmad Zaki and Rendy Thamrin	
Dr. Saharjo Road Condition Audit Using IRAP Method to Achieve 3 Star Rating	265
Ni Luh Putu Shinta Eka Setyarini and Garry Edison	
Analyzing Zones and Accessibility of Public Senior High School in Makassar City	277
Ardiansyah, Syafruddin Rauf, and Sumarni Hamid Aly	
Evaluation Readiness of Contractor and Government in Implementing the Road Preservation Program: Case Study National Road in Indonesia	289
Maharani Pasha Umar, Ayomi Dita Rarasati, and R. Jachrizal Sumabrata	
Analysis of Travel Behavior Under Flooding Condition Based on Probe Data in Ubon Ratchathani City, Thailand	303
Noriyasu Tsumita, Kohga Miyamura, Sittha Jaensirisak, and Atsushi Fukuda	
Modeling Movement of Rice Commodities Between Provinces in Indonesia	317
Dwi Novi Wulansari, Saskia Kanisaa Puspanikan, and Zafir Istawa Pramodya	
Single Tariff System to Provide Incentive for Longer Distance Users and to Keep Efficient Toll Gates Operations	329
Apta Sampoerna and Leksmono Suryo Putranto	
Analysis of Transportation Accessibility in Shopping Areas in Makassar City	341
Jeffryanto Londongsalu, Syafruddin Rauf, and Sumarni Hamid Aly	

Priority of Sustainable Transport Policy Implementation in Expert Perspective	353
Nindyo Cahyo Kresnanto, Ricko Nasrianda Sinaga, Risdiyanto, and Wika Harisa Putri	
Prioritizing District Road Maintenance Using AHP Method	363
Nindyo Cahyo Kresnanto	
Overview of Side Friction Factors for Evaluation of Capacity Calculation at Indonesian Highway Capacity Manual	373
Najid and Tamara Marlianny	
Thickness Pavement Design Based on Heavy Vehicle Loads	385
Anita Rahmawati, Emil Adly, and Wahyu Widodo	
Performance of Polymer Modified Asphalt Mixture Using Gypsum Filler	399
Rindu Twidi Bethary, Dwi Esti Intari, and Siti Asyiah	
Resistance of Modified Concrete-Wearing Course Mixture Using LDPE Polymer Against Damage Due to Water Immersion	411
Indah Handayasari, Dyah Pratiwi Kusumastuti, and Arief Suardi Nur Chairat	
Experimental Study on the Self-healing Ability of Wearing Course-Asphalt Concrete Mixes Reinforced with Steel Particles	421
Anissa Noor Tajudin, Arif Sandjaya, Daniel Christianto, and M. Bagas Haris Kurniawan	
The Use of Gauss-Jordan Elimination Method in Determining the Proportion of Aggregate Gradation	431
Bagus Hario Setiadji, Supriyono, and Amelia Kusuma Indriastuti	
Conceptual System Model Dynamic OSH Performance Improvement of Building Construction Projects.	441
Feri Harianto, Nadjadji Anwar, I Putu Artama Wiguna, and Erma Suryani	
Experiment the Effect of Providing Monetary Incentives and Safety Patrols on Work Safety Behavior in Construction Project Implementation	449
Feri Harianto, Nadjadji Anwar, I Putu Artama Wiguna, and Erma Suryani	
Development of Activity-Based Safety Plan for Precast Parapet Panel Work in Elevated Construction	459
Pungky Dharma Saputra, Anasya Arsita Laksmi, Nina Purwanti, and Muhammad Hamzah Fansuri	

Game Theory Approach for Risk Allocation in Public Private Partnership	471
Adhika Nandi Wardhana, Farida Rachmawati, and Erwin Widodo	
Analysis of Change Orders Based on the Type of Road Construction	479
Mega Waty and Hendrik Sulistio	
Implementation of Occupational Safety and Health Management Systems During COVID-19 Pandemic on High-Rise Building Construction Projects	489
Alexsander Martin and Mega Waty	
Developing Knowledge Management Strategy to Improve Project Communication in Construction of Coal Mining Infrastructure: A Conceptual Study	497
Alfandias Seysna Putra, Leni Sagita Riantini, and Mohammad Ichsan	
Portable Structure for Post-disaster Temporary Shelter	511
Bayu Ariaji Wicaksono, Dalhar Susanto, and Emirhadi Suganda	
Concrete Damage Risk Rating Examination to Existing Buildings	523
Henny Wiyanto, Reagen Yocom, and Glen Thenaka	
A Literature Review of Life Cycle Costing of Dam Asset Management	533
Ismi Astuti Anggraini, Ayomi Dita Rarasati, and R. Jachrizal Sumabrata	
An Explorative Study to Public Rental Housing's Tenants Using Importance Performance Analysis	543
Indira Surya Kumala and Farida Rachmawati	
Modeling of Conceptual Framework to Understand Stakeholders' Awareness in Construction Industry in Thailand Affected by the 3rd Wave of COVID-19 Pandemic	557
Nattasit Chaisaard and Grit Ngowtanasuwan	
A Literature Review on Healthy Buildings Based on Various Perspectives	567
Louferinio Royanto Amatkasmin, Mohammed Ali Berawi, and Mustika Sari	
Analysis of Dominant Influence Factors of the Application of the Incentive Plan Model on the Material Waste	585
Triongko Agatha Bayuaji and Basuki Anondho	
Accuracy of Schedule Performance Calculation with ES Method and EV Method	597
Cangga Kristiandi and Basuki Anondho	

**Analysis of Dominant External Factors on Construction Project
Overhead Costs 609**
Hendi Wijaya and Basuki Anondho

**A Competency Model of Thai Small-Medium Enterprise Contractors
for Owner Satisfaction in Construction Projects 619**
Grit Ngowtanasuwan

About the Editors

Prof. Dr. Han Ay Lie is working as Professor in the Department of Civil Engineering, Diponegoro University, Indonesia. At present, she is also Chairwoman of the International Federation of Structural Concrete Indonesia (fib-Indonesia). She has also taken the role of external examiner and is Advisor for many national and international universities. Her research interests include graded concrete, fibre-reinforced plastics for concrete, retrofitting and external reinforcing, modeling, and finite element analysis.

Prof. Dr. Monty Sutrisna is Professor of Construction and Project Management at Massey University, New Zealand. He is currently Head of the School of Built Environment at the same institution. His expertise includes Construction and Engineering Management, Construction Productivity, Construction Procurement and Contracts, Construction IT and other Advanced Technologies applied in Construction, Construction Project Management, Decision Making Modelling/Support, and Knowledge-Based Systems and Artificial Intelligence.

Dr.-Ing. Joewono Prasetyo teaches in the Department of Transportation Engineering Technology at Universiti Tun Hussein Onn Malaysia (UTHM), Malaysia. He has been Head of the Industry Center of Excellence—Railway (ICoE Rel) of Universiti Tun Hussein Onn Malaysia (UTHM) since 2020. He is professionally certified as Permanent Way Inspection: CO2 Track Maintenance Works (2019) and Professional Technologist (2020). His research interests include land transportation engineering, transportation safety, and rail technology.

Analysis of Diaphragm Wall Stability with Dewatering and Ground Freezing Treatment



Eduard Teja and Aniek Prihatiningsih

Abstract In underground construction, we really need to consider the presence of groundwater. Groundwater can interfere and even endanger the construction and excavation process. Usually, in the tunnel construction process, groundwater needs to be eliminated. So that the tunnel construction process can be carried out as safely as possible. Sometimes the construction of a tunnel in the middle of a city also needs some soil reinforcement to not disturb the surrounding buildings. One method that can be used to eliminate and strengthen excavated walls is ground freezing. Also, we know the dewatering process to eliminate the effects of groundwater by lowering the groundwater level. In this research, the effect of the dewatering and ground freezing processes will be calculated by stabilizing the diaphragm wall. Ground freezing will cause the bonding of soil particles to become stronger. Then the stability of the soil will be much better than dewatering. The result shows that ground freezing has the smallest deflection and moment. So, the stability of the ground freezing excavation has the best value. However, in terms of the price of ground freezing, it is still too high, so studies are needed to minimize the price.

Keywords Ground freezing · Dewatering · Diaphragm wall

1 Introduction

Indonesia is one of the largest countries in Southeast Asia in terms of regional area and population. It is very important for Indonesia to continue to improve its infrastructure development. One of the infrastructures that are being built rapidly is transportation. As we know in Jakarta has just had MRT (Mass Rapid Transit) and LRT (Light Rail Transit). In the construction of MRT and LRT must have high

E. Teja (✉) · A. Prihatiningsih

Universitas Tarumanagara, Letjen S. Parman Street No. 1, Jakarta, Indonesia
e-mail: eduard.325170114@stu.untar.ac.id

A. Prihatiningsih

e-mail: aniekp@ft.untar.ac.id

work safety. The most crucial thing is the excavation for the tunnels, this is crucial because the excavation of the tunnels is below groundwater level, at a depth of 17–36 m below ground level [1].

In excavation that are under groundwater, the thing that must be prevented is swelling. Swelling of the soil occurs due to the pressure of water trying to get out of the ground. This pressure will later become a disturbance in the installation of the tunnel shield/tunnel wall and can cause failure in excavation stability. If this problem is not addressed, it will be very dangerous and can even cause fatalities, so for this reason, this problem must be prevented. Various precautions can be taken to prevent swelling. The thing that is often applied is dewatering.

Dewatering (Fig. 1) is done by lowering the groundwater level to an adjustable depth. By lowering the groundwater level to minimize swelling. In addition to dewatering abroad, there is also a ground freezing method. The ground freezing method itself is done by freezing the groundwater around the excavation so that a waterproof layer is formed around the excavation. This waterproof layer is useful for protecting excavations. Before determining the dewatering method to be used, the nature of the soil must be considered. Because if we use the wrong dewatering method, it will not only hamper the project but also increase the costs incurred [2].

Ground freezing (Fig. 2) has been carried out since 1862 where this method is used to build mining tunnels [4]. Ground freezing was first time used in North Wales. With the development of the era, this method can be used for tunnel



Fig. 1 Wellpoint system [3]

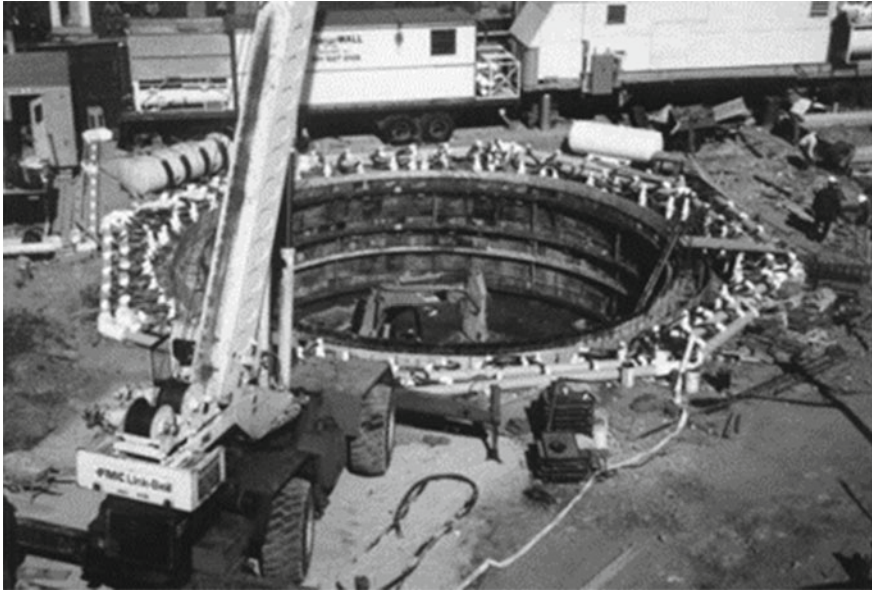


Fig. 2 Ground freezing [5]

construction. Ground freezing is done by inserting a pipe around the excavation. This pipe installation also needs to be considered because pipes with different sizes and different temperatures can affect the area of land that can be frozen. The ground freezing method has not been used in Indonesia, but in Singapore, it was used during the construction of the Thomson East-Coast Line Marina Bay Station.

1.1 Diaphragm Wall

The diaphragm wall or bulkhead wall is an artificial membrane with a certain thickness (according to the thickness of the digging tool called a grabber) and a certain depth [6]. A diaphragm wall is a retaining wall that is installed as a system for further development of the secant pile and contiguous pile system. In calculating the stability of the diaphragm wall, it will be done by calculating the active and passive earth stresses that appear in Eqs. 1–4 [7].

$$P_a = \gamma h k_a \quad (1)$$

$$k_a = \tan^2 \left(45 - \frac{\phi}{2} \right) \quad (2)$$

$$P_p = \gamma h k_p \quad (3)$$

$$k_p = \tan^2 \left(45 + \frac{\phi}{2} \right) \quad (4)$$

The formulas above are used because the soil is considered unable to hold itself (worst condition). For condition 4, a formula will be used where the ability of the soil to hold itself is considered. Because when ground freezing, the water around the soil freezes so that the soil bonds become stronger. In theory, this freezing will increase the compressive strength of the soil to be stronger. As a result, the shear strength of the soil also increases (Fig. 3).

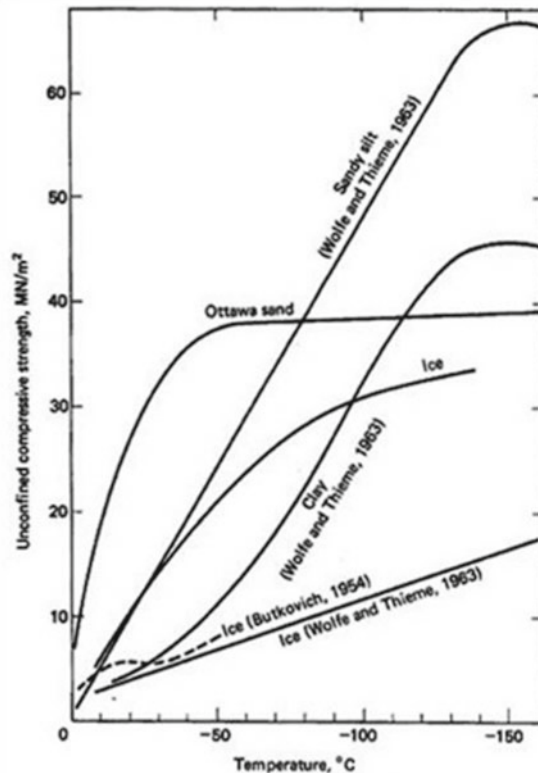
So, to calculate the ability of the soil to hold itself underground freezing conditions, the following formula is shown in Eqs. 5 and 6.

$$P_a = \gamma h k_a - 2c \sqrt[2]{k_a} \quad (5)$$

$$P_p = \gamma h k_p + 2c \sqrt[2]{k_p} \quad (6)$$

for k_a and k_p , use the same formula as before.

Fig. 3 Relationship between temperature and unconfined compressive strength [8]



2 Research Methods

The research will be carried out in 4 soil conditions with excavations held in place with a diaphragm wall. Excavation with a depth of 20 m and a diaphragm wall with a depth of 40 m. The size of the diaphragm wall used is 1 m with a calculation of every 1 m, so a cross-section of 1×1 m is used. The first condition is in-situ soil, where the unit weight of soil used is obtained from correlation and laboratory data. In condition 2, the soil is saturated, then the unit weight of soil is used to use the saturated specific gravity obtained from the correlation. Condition 3 occurs in soil with dewatering treatment where it is considered that in the lower soil (soil under excavation), there is still water flow due to dewatering. So that at a depth of 20–40 m, the unit weight of soil used is the saturation density, and for a depth of 0–20 m, the in-situ unit weight of soil is used. Then for condition 4, namely the ground freezing condition, the in-situ unit weight of soil will be used. The difference with the in-situ condition is the use of soil properties.

2.1 Soil Properties

Unit weight of soil was obtained from correlation and laboratory data. Unit weight is divided into 2, namely the state of the original soil (in-situ) and the state of wet soil. For wet soil conditions, the density with the largest number will be taken in the correlation table. In the original soil condition, the density of laboratory results and correlations will be used. Then soil density will be obtained and tabulated as Table 1.

Cohesion is obtained from laboratory results and correlations which will then be taken the average value of correlations and laboratory data. Then it will be tabulated as Table 2.

The value of undrained shear strength is obtained from the correlation and tabulated in Table 3.

Table 1 Unit weight of soil

Soil layer		Soil classification	γ_{sat} (kN/m ³)	γ (kN/m ³)
Top elev. (m)	Bottom elev. (m)			
0	7	Fine grained	22	15
7	11	Fine grained	22	16
11	20	Coarse grained	20	20
20	23	Fine grained	22	15
23	26	Coarse grained	20	19
26	35	Fine grained	22	19
35	40	Fine grained	22	19

Table 2 Cohesion

Soil layer		Soil classification	Consistency	C' (kPa)
Top elev. (m)	Bottom elev. (m)			
0	7	Fine grained	Very soft	8
7	11	Fine grained	Stiff	24
11	20	Coarse grained	Dense	–
20	23	Fine grained	Soft	20
23	26	Coarse grained	Dense	–
26	35	Fine grained	Very stiff	30
35	40	Fine grained	Hard	60

Table 3 Shear strength

Soil layer		Soil classification	Consistency	Su (kPa)
Top elev. (m)	Bottom elev. (m)			
0	7	Fine grained	Very soft	9.6
7	11	Fine grained	Stiff	81.439
11	20	Coarse grained	Dense	90
20	23	Fine grained	Soft	28.8
23	26	Coarse grained	Dense	90
26	35	Fine grained	Very stiff	109.867
35	40	Fine grained	Hard	194.133

The value of the internal shear angle is obtained from the correlation and tabulated in Table 4.

The correlation results and lab data will then be processed to obtain the earth stress acting on the wall. Then the deflection will be searched, and the results will be compared. In the calculation of the earth lateral pressure, the following results are obtained. For Fig. 4 shows the earth's stress in in-situ conditions. Figure 5 for earth stress at saturation condition. Figure 6 is an image of the earth's stress for the dewatering condition. The ground freezing conditions are depicted in Fig. 7.

Table 4 Shear angle

Soil layer		Soil classification	Consistency	Φ' (°)
Top elev. (m)	Bottom elev. (m)			
0	7	Fine grained	Very soft	10
7	11	Fine grained	Stiff	17
11	20	Coarse grained	Dense	35
20	23	Fine grained	Soft	14
23	26	Coarse grained	Dense	35
26	35	Fine grained	Very stiff	17
35	40	Fine grained	Hard	26

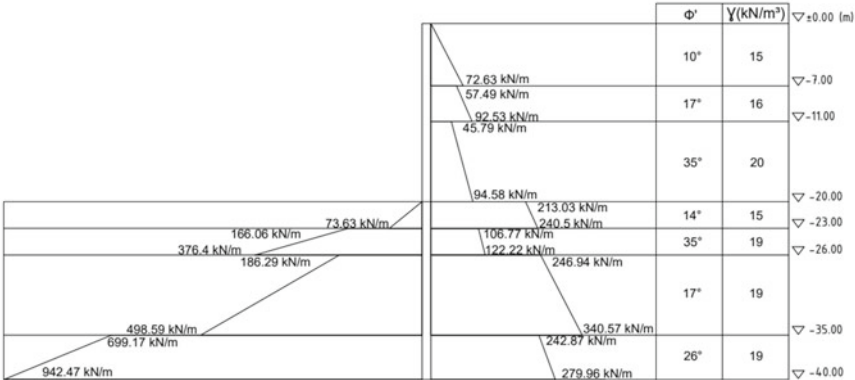


Fig. 4 Earth lateral pressure in-situ conditions

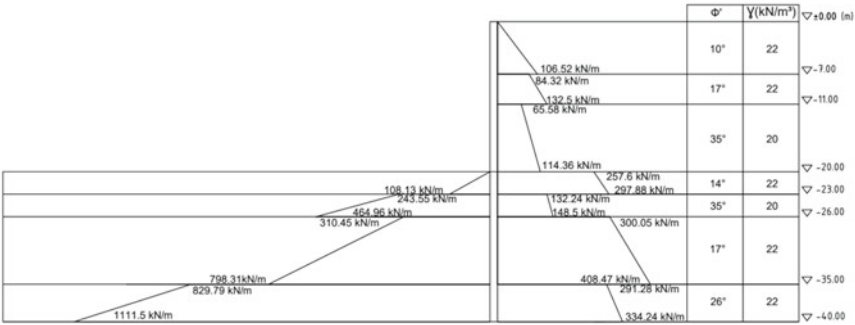


Fig. 5 Earth lateral pressure saturated conditions

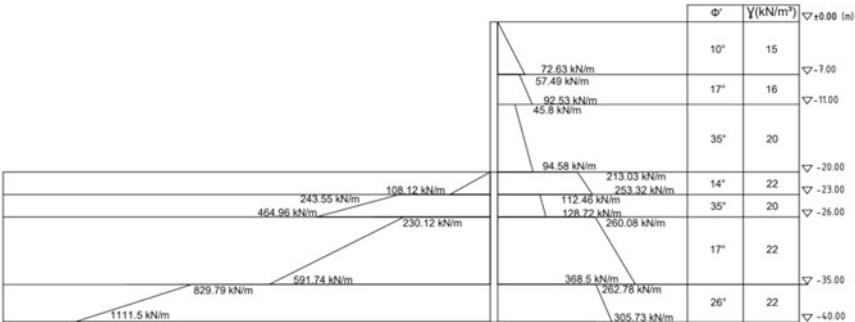


Fig. 6 Earth lateral pressure dewatering conditions

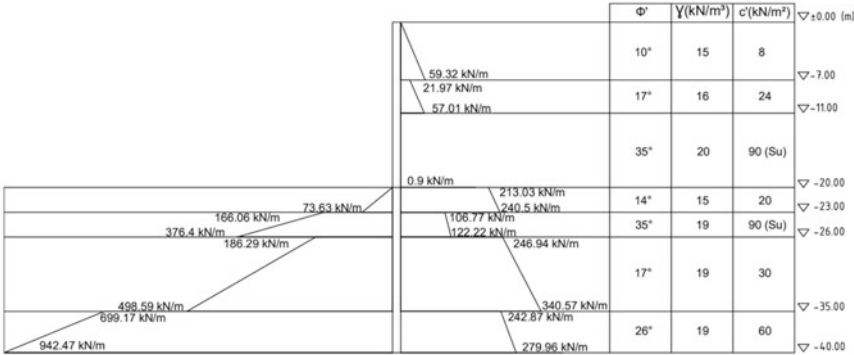


Fig. 7 Earth lateral pressure ground freezing conditions

3 Result

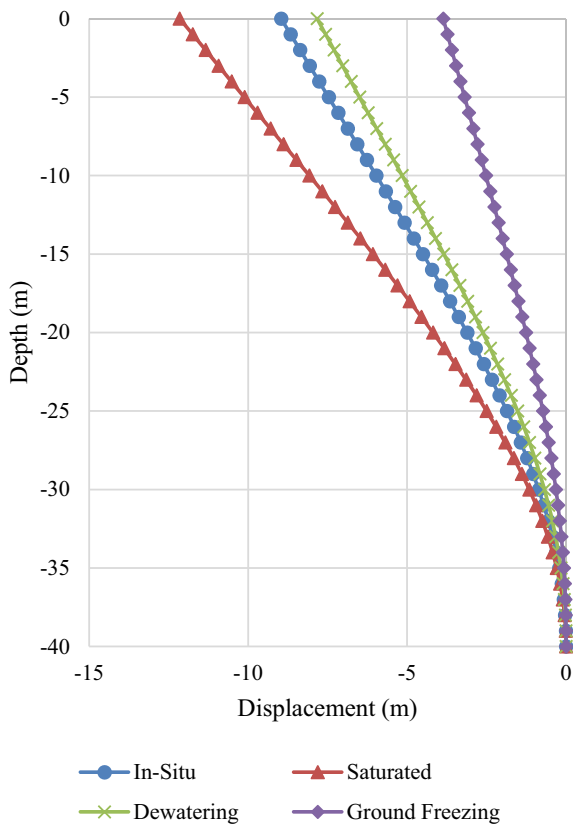
3.1 Deflection and Moment

The results are as shown in Figs. 8 and 9. For in-situ conditions, the maximum deflection is 8.964 m, the saturation condition is maximum deflection 12.154 m, and for dewatering conditions, the maximum deflection is 7.831 m. For ground freezing conditions, if we look at the graph, the maximum is 3.865 m.

4 Conclusions and Suggestions

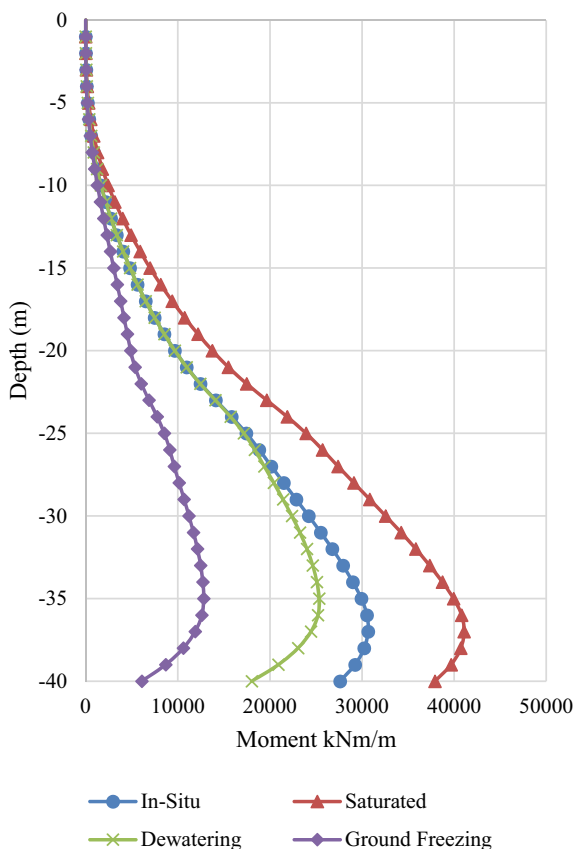
4.1 Conclusions

1. The greatest deflection occurs when the soil is saturated, which is 12.154 m. Then the second largest deflection is 8.964 m in in-situ conditions. The third-largest deflection is the dewatering condition, which is 7.831 m. The smallest deflection during ground freezing is 3.865 m.
2. From the results of the deflection comparison, it can be concluded that when ground freezing produces the best soil stability.
3. The deflection that occurs in 4 conditions is still more than the permitted limit, namely $L/360$ or 111 mm.
4. The biggest moment that the wall must hold is during saturation conditions with a moment magnitude of 41,082 kNm/m and the smallest moment is during ground freezing conditions, which is 17,818 kNm/m.
5. Each condition requires reinforcement in the excavation.

Fig. 8 Deflection results

4.2 Suggestions

1. Even though ground freezing is the best method, it is expensive in terms of price. Therefore, it is necessary to conduct further studies or research to reduce and develop this method in Indonesia.
2. The disadvantage of in-situ conditions is that the deflection is too large so that it cannot rely solely on the ability of the retaining wall, and therefore it is necessary to do much more reinforcement compared to dewatering or ground freezing.
3. In the use of ground freezing, because it is only up to a depth of 20 m (equivalent to excavation) and the calculation using the worst cohesion and shear strength (in-situ soil properties), results are obtained that still require reinforcement. If ground freezing is done at different depths and a cooler temperature is used. Then the possibility of ground freezing does not require reinforcement at all so that an open excavation can be done.

Fig. 9 Moment results

4. The use of ground freezing also has additional benefits, one of which is that it does not cause additional settlement due to underground water flow during dewatering which carries fine particles and erodes the soil. Ground freezing should be considered in the future.

References

1. Jakarta MRT (2020) Profil MRT Jakarta Fase 2A. <https://jakartamrt.co.id/id/info-terkini/profil-mrt-jakarta-fase-2a>. Accessed 15 Feb 2021
2. Federal Highway Administration (1982) Groundwater control in tunneling. Department of Transportation, Massachusetts
3. Cashman PM, Preene M (2020) Groundwater lowering in construction: a practical guide to dewatering. CRC Press, Florida
4. Vakulenko I (2018) Feasibility of ground freezing as potential stabilizing measure for tunnelling through soil filled depression at Bergåsen road tunnel. Master's thesis, NTNU

5. Powers JP, Corwin AB, Schmall PC, Kaeck WE (2007) Construction dewatering and groundwater control: new methods and applications. Wiley, New Jersey
6. Mistra H (2012) Struktur dan konstruksi bangunan tinggi sistem top and down. Griya Kreasi, Jakarta
7. Bowles JE (1997) Foundation analysis and design. McGraw-Hill, Illinois
8. Sayles FH (1966) Low temperature soil mechanics. Technical Note, Cold Regions Research and Engineering Laboratory, Hanover, NH