

LEMBAR
HASIL PENILAIAN SEJAWAT SEBIDANG ATAU *PEER REVIEW*
KARYA ILMIAH : JURNAL ILMIAH

Judul Artikel Ilmiah : Turbulent Flow Analysis in Auxiliary Cross-Flow Runner of a Proto X-3 Bioenergy Micro Gas Turbine using RNG k-ε Turbulence Model
 Nama Penulis : Steven D., Ahmad I. S., Budiarsa, Asyari D., AgusT. G., Achmad B. W. and **HartoTanujaya**
 Jumlah Penulis : 7 (tujuh)
 Status Pengusul : Penulis Pendamping
 Identitas Buku Ilmiah : a. Nama Jurnal : ARPN Journal of Engineering and Applied Sciences
 b. Nomor ISSN : 1819 - 6608
 c. Vol. No. Bln. Th. : Volume 10, Issue 16, 2015
 d. Penerbit: Asian Research Publishing Network (ARPN)
 e. Jumlah halaman : 6 halaman
 f. Alamat Web Jurnal: http://www.arpnjournals.com/jeas/research_papers/rp_2015/jeas_0915_2522.pdf

Kategori Publikasi Buku Ilmiah (beri (√) pada kategori yang tepat)

Jurnal Ilmiah Internasional Bereputasi
 Jurnal Ilmiah Internasional
 Jurnal Ilmiah Nasional Terakreditasi
 Jurnal Ilmiah Nasional Tidak Terakreditasi
 Jurnal Ilmiah Terindex di DOAJ/CABI/COPERNICUS/Lainnya

Hasil Penilaian *Peer Review*

Komponen Yang Dinilai	Nilai Maksimal Jurnal Ilmiah (isi di kolom yang sesuai)					Nilai Akhir <i>peer</i> Yang Diperoleh
	Internasional Bereputasi	Internasional	Nasional Terakreditasi	Nasional Tidak Terakreditasi	Nasional Terindex DOAJ dll	
Kelengkapan dan kesesuaian unsur isi <i>prosiding</i> (10%)	90%x10% x 40					3,6
Ruang lingkup dan kedalaman pembahasan (30%)	93%x30% x 40					11,16
Kecukupan & kemutakhiran data/informasi dan metodologi (30%)	92%x30% x 40					11,04
Kelengkapan unsur & kualitas penerbit (30%)	95%x30% x 40					11,4
Nilai <i>peer</i> Maksimal (100%)	40					37,2
Kontribusi Pengusul; (nilai akhir <i>peer</i> x bobot penulis pendamping : dibagi 6 penulis = $37,2 \times 40\% : (6) = 2,48$)						2,48
Komentar/Usulan <i>Peer Review</i> : (Terlampir hal. 2)	1. Tentang kelengkapan dan kesesuaian unsur: 2. Tentang ruang lingkup dan kedalaman pembahasan; 3. Kecukupan dan kemutakhiran data/informasi dan metodologi; 4. Kelengkapan unsur dan kualitas penerbit: 5. Indikasi Plagiasi: 6. Kesesuaian Bidang Ilmu: <i>Terlampir</i>					

Jakarta, 10.12. 2019
 Penilai I



(Prof. Dr. Ir. Agustinus Purna Irawan)
 NIDN/NIP : 0328087102 / 10398021
 Jabatan/Pangkat/Bidang Ilmu: Professor/IVC/Teknik Mesin
 Unit Kerja: Fakultas Teknik – Universitas Tarumanagara

<p>KOMENTAR PEER REVIEW</p>	<p>1. Tentang kelengkapan dan kesesuaian unsur:</p> <p>Artikel dengan judul Turbulent Flow Analysis in Auxiliary Cross-Flow Runner of a Proto X-3 Bioenergy Micro Gas Turbine using RNG k-ε Turbulence Model, ditulis secara benar sesuai dengan standar penulisan artikel ilmiah yang memuat pendahuluan, metode/peralatan yang digunakan, pengambilan data dan data, analisa dan kesimpulan.</p> <p>2. Tentang ruang lingkup dan kedalaman pembahasan:</p> <p>Artikel tersebut membahas mengenai analisa auxiliary cross-flow runner of a Proto X-3 Bioenergy micro gas turbine dengan spesifik dan mudah dipahami.</p> <p>3. Kecukupan dan kemutakhiran data/informasi dan metodologi;</p> <p>Metodologi terstruktur dan jelas, data dan referensi yang diambil up to date.</p> <p>4. Kelengkapan unsur dan kualitas penerbit:</p> <p>Editorial board dan reviewer untuk Jurnal "ARNP Journal of Engineering and Applied Sciences" jelas dan terstruktur dan dapat diakses online. Penerbit Asian Research Publishing Network (ARNP) dapat dilacak melalui daring, terindeks oleh Scopus dan memenuhi syarat jurnal ilmiah internasional, Q3 (2015), SJR (2018) 0,22 dan H Index 21. Jurnal ber ISSN/ISBN.</p> <p>5. Indikasi Plagiasi:</p> <p>Artikel dengan judul Turbulent Flow Analysis in Auxiliary Cross-Flow Runner of a Proto X-3 Bioenergy Micro Gas Turbine using RNG k-ε Turbulence Model yang diterbitkan oleh Asian Research Publishing Network (ARNP), dan dapat dibaca secara daring melalui http://www.arnpjournals.com/jeas/research_papers/rp_2015/jeas_0915_2522.pdf, tidak ditemukan indikasi plagiasi dengan tingkat kesamaan menggunakan software Turnitin sebesar 15 %.</p> <p>6. Kesesuaian Bidang Ilmu:</p> <p>Artikel tersebut membahas tentang analisa auxiliary cross-flow runner of a Proto X-3 Bioenergy micro gas turbine dan ada Linieritas keilmuan dengan pengusul.</p>
---------------------------------	--

Jakarta, 18.12. 2019
Penilai I



(Prof. Dr. Ir. Agustinus Purna Irawan)
NIDN/NIP : 0328087102 / 10398021
Jabatan/Pangkat/Bidang Ilmu: Professor/IVC/Teknik Mesin
Unit Kerja: Fakultas Teknik – Universitas Tarumanagara

LEMBAR
HASIL PENILAIAN SEJAWAT SEBIDANG ATAU PEER REVIEW
KARYA ILMIAH : JURNAL ILMIAH

Judul Artikel Ilmiah : Turbulent Flow Analysis in Auxiliary Cross-Flow Runner of a Proto X-3 Bioenergy Micro Gas Turbine using RNG k-ε Turbulence Model
 Nama Penulis : Steven D., Ahmad I. S., Budiarmo, Asyari D., AgusT. G., Achmad B. W. and **HartoTanujaya**
 Jumlah Penulis : 7 (tujuh)
 Status Pengusul : Penulis Pendamping
 Identitas Buku Ilmiah : a. Nama Jurnal : ARPN Journal of Engineering and Applied Sciences
 b. Nomor ISSN : 1819 - 6608
 c. Vol. No. Bln. Th. : Volume 10, Issue 16, 2015
 d. Penerbit: Asian Research Publishing Network (ARPN)
 e. Jumlah halaman : 6 halaman
 f. Alamat Web Jurnal: http://www.arpnjournals.com/jeas/research_papers/rp_2015/jeas_0915_2522.pdf

Kategori Publikasi Buku Ilmiah (beri (√) pada kategori yang tepat)

- Jurnal Ilmiah Internasional Bereputasi
- Jurnal Ilmiah Internasional
- Jurnal Ilmiah Nasional Terakreditasi
- Jurnal Ilmiah Nasional Tidak Terakreditasi
- Jurnal Ilmiah Terindex di DOAJ/CABI/COPERNICUS/Lainnya

Hasil Penilaian Peer Review

Komponen Yang Dinilai	Nilai Maksimal Jurnal Ilmiah (isi di kolom yang sesuai)					Nilai Akhir Yang Diperoleh
	Internasional Bereputasi	Internasional	Nasional Terakreditasi	Nasional Tidak Terakreditasi	Nasional Terindex DOAJ dll	
Kelengkapan dan kesesuaian unsur isi <i>prosiding</i> (10%)	4					3,72
Ruang lingkup dan kedalaman pembahasan (30%)	12					11,28
Kecukupan & kemutakhiran data/informasi dan metodologi (30%)	12					11,4
Kelengkapan unsur & kualitas penerbit (30%)	12					11,64
Total = 100%	40					38,04
Kontribusi Pengusul;(nilai akhir <i>peer</i> x bobot pendamping : dibagi 6 penulis pendamping)= 38,04 x 40% : (6)= 2,536						2,536
Komentar/Usulan Peer Review:	1. Tentang kelengkapan dan kesesuaian unsur; 2. Tentang ruang lingkup dan kedalaman pembahasan; 3. Kecukupan dan kemutakhiran data/informasi dan metodologi; 4. Kelengkapan unsur dan kualitas penerbit; 5. Indikasi Plagiasi; 6. Kesesuaian Bidang Ilmu: <i>Terlampir</i>					

Jakarta, 12-11-2019
 Penilai

(Dr. Ir. M. Sobron Yamin L., M.Sc.)
 NIDN/NIP : 0114056705 / 10311009
 Jabatan/Pangkat/Bidang Ilmu: Lektor Kepala/IV/Teknik Mesin
 Unit Kerja: Fakultas Teknik – Universitas Tarumanagara

KOMENTAR
PEER REVIEW

1. Tentang kelengkapan dan kesesuaian unsur:

Artikel **Turbulent Flow Analysis in Auxiliary Cross-Flow Runner of a Proto X-3 Bioenergy Micro Gas Turbine using RNG k- ϵ Turbulence Model**, ditulis sesuai dengan kaidah penulisan artikel ilmiah yang meliputi pendahuluan, metode/alat, data dan analisa serta kesimpulan.

2. Tentang ruang lingkup dan kedalaman pembahasan:

Artikel tersebut membahas mengenai analisa auxiliary cross-flow runner of a Proto X-3 Bioenergy micro gas turbine dengan kedalaman pembahasan yang spesifik.

3. Kecukupan dan kemutakhiran data/informasi dan metodologi;

Data yang diambil dan digunakan untuk analisa dan referensi tergolong baru dan mutakhir, dengan susunan metodologi yang baik.

4. Kelengkapan unsur dan kualitas penerbit:

Editor dan reviewer Jurnal "**ARPN Journal of Engineering and Applied Sciences**" tersusun dan terorganisir, ber ISSN/ISBN dan dapat diakses online. Penerbit **Asian Research Publishing Network (ARPN)** dapat dilacak melalui daring, terindeks oleh **Scopus dan memenuhi syarat jurnal ilmiah internasional, Q3 (2015), SJR (2018) 0,22 dan H Index 21.**

5. Indikasi Plagiasi:

Artikel **Turbulent Flow Analysis in Auxiliary Cross-Flow Runner of a Proto X-3 Bioenergy Micro Gas Turbine using RNG k- ϵ Turbulence Model** diterbitkan oleh Asian Research Publishing Network (ARPN), dan dapat dibaca secara daring melalui http://www.arpnjournals.com/jeas/research_papers/rp_2015/jeas_0915_2522.pdf, tidak ditemukan indikasi plagiasi.

6. Kesesuaian Bidang Ilmu:

Artikel tersebut membahas tentang analisa auxiliary cross-flow runner of a Proto X-3 Bioenergy micro gas turbine dan ada kesesuaian dan linieritas keilmuan dengan pengusul.

Jakarta, 14-11-2019

Penilai II

(Dr. Ir. M. Sobron Yamin L., M.Sc.)

NIDN/NIP : 0114056705 / 10311009

Jabatan/Pangkat/Bidang Ilmu: Lektor Kepala/IV/Teknik Mesin

Unit Kerja: Fakultas Teknik – Universitas Tarumanagara

ARPN Journal of Engineering and Applied Sciences

Country [Pakistan - III SJR Ranking of Pakistan](#)

Subject Area and Category [Engineering](#)
[Engineering \(miscellaneous\)](#)

Publisher [Asian Research Publishing Network \(ARPN\)](#)

Publication type [Journals](#)

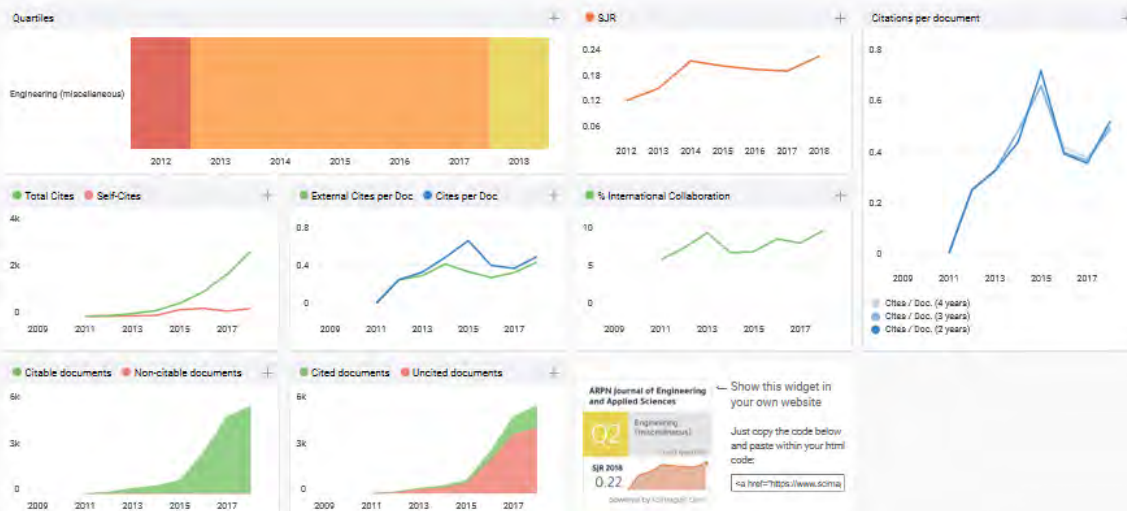
ISSN [19196608](#)

Coverage [2011-ongoing](#)






21

H Index

Scope ARPN Journal of Engineering and Applied Sciences (ISSN 1919-6608) is an online peer-reviewed International research journal aiming at prioritizing and publishing original high quality research in all disciplines of engineering sciences and technology. All research articles submitted to ARPN-JEAS should be original in nature, never previously published in any journal or presented in a conference or undergoing such process across the globe. All the submissions will be peer-reviewed by the panel of experts associated with particular field. Submitted papers should meet the internationally accepted criteria and manuscripts should follow the style of the journal for the purpose of both reviewing and editing. Our mission is -In cooperation with our business partners, lower the world-wide cost of research publishing operations. -Provide an infrastructure that enriches the capacity for research facilitation and communication, among researchers, college and university teachers, students and other related stakeholders. -Reshape the means for dissemination and management of information and knowledge in ways that enhance opportunities for research and learning and improve access to scholarly resources. -Expand access to research publishing to the public. -Ensure high-quality, effective and efficient production and support good research and development activities that meet or exceed the expectations of research community. Scope of Journal of Engineering and Applied Sciences:-Engineering Mechanics-Construction Materials-Surveying-Fluid Mechanics & Hydraulics -Modeling & Simulations -Thermodynamics -Manufacturing Technologies -Refrigeration & Air-conditioning -Metallurgy -Automatic Control Systems -Electronic Communication Systems -Agricultural Machinery & Equipment -Mining & Minerals -Mechatronics -Applied Sciences -Public Health Engineering -Chemical Engineering -Hydrology -Tube Wells & Pumps -Structures


[Homepage](#)
[How to publish in this journal](#)
[Contact](#)
[Join the conversation about this journal](#)


[Archive](#) | [Feedback](#) | [Links](#) | [Contact Us](#) | [Site Map](#)

Welcome to ARPJN Journal of Engineering and Applied Sciences

Home
Archive
Submit Paper
Author Guidelines
Editorial Board
Publication Fee
Status of upcoming papers

ANNOUNCEMENT
 Call For
 Research Papers
 online publishing

ARPJN Journal of Engineering and Applied Sciences
 Engineering (miscellaneous)
 SJR 2018
 0.22
 powered by Scimago.com

ARPJN Journal of Engineering and Applied Sciences (ISSN 1819-6608) is an online peer-reviewed International research journal aiming at promoting and publishing original high quality research in all disciplines of engineering sciences and technology.

All research articles submitted to ARPJN-JEAS should be original in nature, never previously published in any journal or presented in a conference or undergoing such process across the globe. All the submissions will be peer-reviewed by the panel of experts associated with particular field. Submitted papers should meet the internationally accepted criteria and manuscripts should follow the style of the journal for the purpose of both reviewing and editing. Our mission is

- In cooperation with our business partners, lower the world-wide cost of research publishing operations.
- Provide an infrastructure that enriches the capacity for research facilitation and communication, among researchers, college and university teachers, students and other related stakeholders.
- Reshape the means for dissemination and management of information and knowledge in ways that enhance opportunities for research and learning and improve access to scholarly resources.
- Expand access to research publishing to the public.
- Ensure high-quality, effective and efficient production and support good research and development activities that meet or exceed the expectations of research community.

Scope of Journal of Engineering and Applied Sciences

- Engineering Mechanics
- Surveying
- Modeling & Simulations
- Manufacturing Technologies
- Metallurgy
- Electronic Communication Systems
- Mining & Minerals
- Applied Sciences
- Chemical Engineering
- Tube Wells & Pumps
- Construction Materials
- Fluid Mechanics & Hydraulics
- Thermodynamics
- Refrigeration & Air-conditioning
- Automatic Control Systems
- Agricultural Machinery & Equipment
- Mechatronics
- Public Health Engineering
- Hydrology
- Structures

Home
Archive
Submit Paper
Author Guidelines
Editorial Board
Publication Fee

Editorial Board

Editor-in-Chief: Engr. J. K. Tarakzai (PAKISTAN)

#	Editors	Country
1	Prof. Dr. R. J. Godwin	UNITED KINGDOM
2	Prof. Dr. Erik Valdemar Cuevas Jimenez	GERMANY
3	Prof. Dr. Hamou SADAT	FRANCE
4	Dr. Mohammad Aminul Islam	JAPAN
5	Prof. Dr. Kui Fu Chen	CHINA
6	Prof. Dr. M. Ashraf Chaudhry	NEW ZEALAND
7	Prof. Dr. A. Sermet Anagun	TURKEY
8	Prof. Dr. Ashraf Mohamed Hemeida	Saudi Arabia
9	Prof. Dr. Krishna Murari Pandey	INDIA
10	Prof. Dr. Magdy A. Ezzat	EGYPT
11	Prof. Dr. Roberto Brighenti	ITALY
12	Dr. Anurag Misra	INDIA
13	Prof. Dr. Adel M. ALIMI	TUNISIA
14	Prof. Dr. Arun Kumar Gupta	INDIA
15	Prof. Demetrios V. Bandekas	GREECE
16	Prof. Dr. Bensafi Abd-El-Hamid	ALGERIA
17	Dr. Rajanish K. Kamat	INDIA
18	Prof. Dr. Asma Thami Ibrahim	IRAQ
19	Prof. Dr. Sylejman Hyseni	KOSOVO
20	Prof. Dr. Halder Zaman	Saudi Arabia
21	Prof. Dr. Debojyoti Mitra	INDIA
22	Prof. Dr. Pandian VASANT	MALAYSIA
23	Prof. Dr. Prakash MMS Kinthada	INDIA

Associate Editors

1	Dr. Dongning Li	USA
2	Dr. Suheyba Yarel	TURKEY
3	Dr. Guoxiang Liu	USA
4	Dr. Nadeem Anjum	PAKISTAN
5	Engr. Malini Sarah Philip	NORWAY
6	Dr. K.V.L.N. Acharyulu	INDIA
7	Engr. Mohammad Khalily Dermany	IRAN
8	Dr. Lamyaa- Gamal Eldeen Taha	EGYPT
9	Dr. OM Prakash Singh	INDIA
10	Engr. Seyyed Mohammad Reza Farshchi	IRAN
11	Dr. Muhammad Imran Din	PAKISTAN
12	Dr. José Carlos Páscoa Marques	PORTUGAL
13	Engr. Fawwaz Jinan Jibrael Jabri	IRAQ
14	Dr. Kanad Ray	INDIA
15	Dr. Shamsuddin Shahid	MALAYSIA
16	Engr. Naveenji Arun	INDIA



Match Overview

15%

- 1 Submitted to Internatio... 4% >
- 2 Budiarso, Ahmad Indr... 4% >
- 3 Siswantara, Ahmad Ind... 4% >
- 4 www.scientific.net 3% >

TURBULENT FLOW ANALYSIS IN AUXILIARY CROSS-FLOW RUNNER OF A PROTO X-3 BIOENERGY MICRO GAS TURBINE USING RNG k-ε TURBULENCE MODEL

Steven Darmawan^{1,2}, Ahmad Indra Soewarna³, Radaris³, Asyari Daryono^{2,7}, Agus Uti Guntawan³, Achmad Bayu Wijayanto³ and Harjo Tanjung³
¹Department of Mechanical Engineering, Universitas Islam Indonesia, Depok, Indonesia, Indonesia
²Department of Mechanical Engineering, Universitas Islam Sumatera Utara, Medan, Indonesia
³Department of Mechanical Engineering, Universitas Dharma Persada, Jl. Rindia Jalan II, Pondok Kelapa, Kabupaten Indragiri Hulu, Riau, Indonesia
 E-mail: stevendarmawan@uii.ac.id

ABSTRACT
 Specific and wide range applications of cross-flow runner has led its application in a Proto X-3 Bioenergy Micro Gas Turbine (MGT) that has been developed. The MGT is a dual-stage axial compressor-turbine type. Furthermore, highly turbulent flow inside the cross-flow fan needs accurate analysis. CFD method with RNG k-ε chosen based on model characteristics. This paper analyzed the flow inside the fan based on the experimental data of the MGT and the result represented by several parameters of turbulent flow. The simulation condition were assumed to be isothermal due to the small temperature difference with the ambient (Prandtl number Pr = 1). The result shows several specific vortex inside the runner. Recirculation flow often caused the secondary vortex occurs at the entry side while the throughflow occurs at the exit side of the fan. The mass flow rate calculated by CFD simulation shows a good agreement with the actual mass flow rate of the cross-flow runner. The results that presented by velocity magnitude, absolute pressure, static dissipation, and turbulent kinetic energy shows a suitable simulation method parameter based on the model. This result shows that the method used is prospective to be applied both on analysis or design of the cross-flow runner.

Keywords: cross-flow runner, MGT, turbulent flow, RNG k-ε turbulence model, recirculation vortex

INTRODUCTION
 Cross-flow runner (CFR, hereafter) is a atmospheric radial turbine that generates power by converting kinetic energy to mechanical energy which based on blade surface (cross-flow runner) [1]. CFR system consist of two main components: the runner itself and the casing with square cross-section. CFR design based on three main characteristics: simple construction, low-cost, and maximum efficiency and has been proposed as Renewable Energy Turbine (RET) for make 3MW hydroelectric generation system [2], [3]. This characteristic has lead the application of CFR as power actuator of a Proto X-3 Bioenergy Micro Gas Turbine (MGT) prototype that has been developed, which is a challenge compressor-turbine [4]. The CFR was driven by the inlet air of the first stage compressor. The high flow air to first stage make it possible to drive the cross-flow fan. Basically, MGT is developed for small power generation up to 700 kW [5], [6]. Some of the advantages of this MGT are high power to weight ratio, high tolerance to many kind of liquid and gaseous fuels and fuel-flexible make this price more suitable to be used as zero-emission turbine-based [7-10].
 During the operation, it is hypothesized, the suction and discharge of CFR occurs radially, generated highly turbulent flow for recirculating and reverse flow [1]. Many experimental and numerical analysis shows the flow complexity of CFR. Experimental study by numbers of researchers has lead to development of two main vortex inside the CFR: throughflow at the outside region and recirculation flow at the inside region [11-17].
 Modeling and energy experiment as well as the simulation has made numerical method also consulted on the design with many turbulence model. Kinnicki use RNG k-ε found the throughflow as well as the recirculation flow [18]. Chang use NED for its numerical analysis the flow of CFR [19]. RNG k-ε also used by Tadjidi [2005] [10], Hwang et al in 2008 use NED k-ε [20]. The current numerical analysis by Sun et al use RNG k-ε turbulence model for cross-flow flow [17]. These numerical results show there are two main vortices occur in CFR: the secondary vortex at recirculation region and vortex in the throughflow region. Since the flow inside the CFR is secondary turbulent, flow analysis of turbulent flow with suitable turbulence model is needed to analysis and can be used for future development of the CFR system. Despite the NED k-ε as the most widely used turbulence model, this model also reported suggest model is overpredicts the compression rate [21-24]. RNG k-ε turbulence model developed by Yakhot & Orszag [25] for recirculating flow has become alternatives as predict such flow [26], [27].
 The aim of this paper is to analyze numerically the flow inside the cross-flow runner with RNG k-ε turbulence model since this model is developed to such flow. The turbulent viscosity diffusivity and turbulent thermal diffusivity is also assumed to be equal (Pr_t = 1) and the density constant to the Yakhot & Orszag model was used. Optimal flow characteristics of cross-flow runner on Proto X-3 can be used to optimized the system to be a compact power tower system.

ORIGINALITY REPORT

15%

SIMILARITY INDEX

8%

INTERNET SOURCES

12%

PUBLICATIONS

7%

STUDENT PAPERS

PRIMARY SOURCES

1

Submitted to International Islamic University
Malaysia

Student Paper

4%

2

Budiarso, , Ahmad Indra Siswantara, Steven
Darmawan, and Harto Tanujaya. "Inverse-
Turbulent Prandtl Number Effects on Reynolds
Numbers of RNG k - ϵ Turbulence Model on
Cylindrical-Curved Pipe", Applied Mechanics
and Materials, 2015.

Publication

4%

3

Siswantara, Ahmad Indra, Budiarso, and Steven
Darmawan. "Investigation of Inverse-Turbulent-
Prandtl Number with Four RNG k - ϵ Turbulence
Models on Compressor Discharge Pipe of
Bioenergy Micro Gas Turbine", Applied
Mechanics and Materials, 2016.

Publication

4%

4

www.scientific.net

Internet Source

3%

Exclude quotes On

Exclude bibliography Off

Exclude matches < 3%

ARPN

by Fakultas Teknik

Submission date: 06-Dec-2019 11:58AM (UTC+0700)

Submission ID: 1228347463

File name: Turbulent_flow_analysis_ARPN.pdf (956.13K)

Word count: 3544

Character count: 19619



TURBULENT FLOW ANALYSIS IN AUXILIARY CROSS-FLOW RUNNER OF A PROTO X-3 BIOENERGY MICRO GAS TURBINE USING RNG $k-\epsilon$ TURBULENCE MODEL

Steven Darmawan^{1,2}, Ahmad Indra Siswantara¹, Budiarmo¹, Asyari Daryus^{1,3}, Agus Tri Gunawan¹, Achmad Bayu Wijayanto³ and Harto Tanujaya²

¹Department of Mechanical Engineering, Universitas Indora, Depok, Jawa Barat, Indonesia

²Department of Mechanical Engineering, Universitas Tarumanagara, Jl. Let.Jen S. Parman No.1 Jakarta, Indonesia

³Department of Mechanical Engineering, Universitas Darma Persada, Jl. Radin Inten II, Pondok Kelapa, Jakarta Indonesia
E-Mail: stevend@ft.untar.ac.id

ABSTRACT

Simple and wide range application of cross-flow runner has lead its application to a Proto X-3 Bioenergy Micro Gas Turbine (MGT) that has been developed. The MGT is a dual-stage radial compressor-turbine type. Furthermore, highly turbulent flow inside the cross-flow fan need accurate analysis. CFD method with RNG $k-\epsilon$ chosen based on models characteristics. This paper analyzed the flow inside the fan based on the experimental data of the MGT and the result represented by several parameters of turbulent flow. The simulation condition were assumed to be isothermal due to the small temperature difference with the turbulent Prandtl number $Pr_t = 1$. The result shows several specific vortex inside the runner. Recirculation flow that caused the eccentric vortex occurs at the inner side while the throughflow occurs at the outside of the fan. The mass flow rate conducted by CFD simulation shows a good agreement with the actual mass flow rate of the cross-flow runner. The results that presented by velocity magnitude, absolute pressure, eddy dissipation, and turbulence kinetic energy shows a realistic on each turbulent parameter based on they trends. This results shows that the method used is prospective to be applied both on analysis or design of the cross-flow runner.

Keywords: cross-flow runner, MGT, turbulent flow, RNG $k-\epsilon$ turbulence model, recirculation vortex.

INTRODUCTION

Cross-flow runner (CFR, hereafter) is a atmospheric radial turbine that generates power by converting kinetic energy to mechanical energy which based on Banki turbine (cross-flow turbine) [1]. CFR system consist of two main components; the runner itself and the nozzle with square cross-section. CFR design based on three main characteristics; simple construction, low-cost, and maximum efficiency and has been prospected as Renewable Energy Resources (RES) for under 3MW hydroelectric generator system [2], [3]. This characteristics has lead the applications of CFR as power extractor of a Proto X-3 Bioenergy Micro Gas Turbine (MGT) prototype that has been developed which is a dual-stage compressor-turbine [4]. The CFR was driven by the inlet air of the first stage compressor. The high flow air to first stage made it possible to drive the cross-flow fan. Basically, MGT is developed for small power generation upto 200 kW [5], [6]. Some of the advantages of this MGT are high power to weight ratio, high tolerance to many kind of liquid and gaseous fuels and biofuels has made this prime mover suitable to be used in Zero-Energy-Building-based [7-10].

During the operation, as a turbomachine, the suction and discharge of CFR occurs radially, generated highly turbulent flow for recirculating and reserve flow [11]. Many experimental and numerical analysis shows the flow complexity of CFR. Experimental study by numbers of researcher has lead to description of two main vortex inside the CFR; throughflow at the outside region and recirculation flow at the inside region [12-17].

Handling and costly experiment as well as the accuration has made numerical method also conducted on last decade with many turbulence model. Kaniecki use RNG $k-\epsilon$ found the throughflow as well as the recirculation flow [18]. Cheng use STD $k-\epsilon$ in numerical analysis the flow of CFR [19]. RNG $k-\epsilon$ also uses by Toffolo (2005) [16]. Hirata et.al in 2008 use STD $k-\epsilon$ [20]. The current numerical analysis by Sun et.al also RNG $k-\epsilon$ turbulence model for more detailed flow [17]. These numerical results show there are two main vortexes occur in CFR; the eccentric vortex at recirculation region and vortex in the throughflow region. Since the flow inside the CFR is undoubtly turbulent, flow analysis of turbulent flow with suitable turbulence model is needed to analysis and can be used for future development of the CFR system. Despite the STD $k-\epsilon$ as the most widely used turbulence model, this model also reported since that model is overpredicts the dissipation rate [21-24]. RNG $k-\epsilon$ turbulence model developed by Yakhot & Orszag [25] for recirculating flow has became alternatives to predict such flows [26], [27].

The aim of this paper is to analyze numerically the flow inside the cross-flow runner with RNG $k-\epsilon$ turbulence model since this model is developed to such flow. The turbulent momentum diffusivity and turbulent thermal diffusivity is also assumed to be equal ($Pr_t = 1$) and the default constant to the Yakhot & Orszag model was used. Optimal flow characteristics of cross-flow runner on Proto X-3 can be used to optimized the system to be a compact prime mover system.



RESEARCH METHODOLOGY

Experimental Set-up

Experiment on Proto X-3 Bioenergy MGT was done according to experiment schematic on Figure-1. According Figure-1, the CFR in which represented by component No.6, installed inside an acrylic casing. The rest of the components on Figure-1 is not discussed in this paper. The CFR is driven by the inlet pre-compressed air of 1st stage compressor. This mechanism clarifies the definition of the CFR. Measurement and acquisition data have been done to several characteristics parameters of MGT.

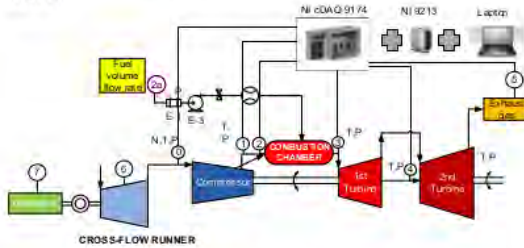


Figure-1. Experimental schematic of prototype.

Numerical Analysis Set-up

Numerical analysis only done on the CFR since the component is now become our research interest. Cross-flow runner was operated by air at first stage compressor inlet as can be seen on Figure-1. Due to the small temperature difference between inlet and outlet of the CFR, the simulation condition is assumed isothermal. The wall is assumed zero-roughness. Computational grid shown on Figure-2, is a quasi three-dimensional grid, consists of 299 x 130 x 3 cells. Grid dependency was conducted to several grid numbers, from coarse to finer which was resulting consistent result. The sliding mesh is used for the rotational move of the runner. Figure-2 also shows the two stage of runner operation.

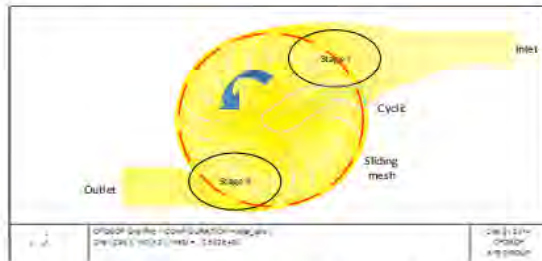


Figure-2. Computational grid of cross-flow fan.

In order to represent the flow phenomena inside the runner, the runner's cross-section is configured to be 8 zones, from 0° to 360° as shown on Figure-3. With this configuration, it is able to describe the special flow phenomena or special vortex that occurs during the

simulation. Zone I and II represent the inlet section and zone V and VI represent the outlet section.

The results of CFD simulation are described into several turbulent flow quantities; velocity magnitude and total pressure. Since the flow inside the runner undoubtedly turbulent, turbulence quantities are described as well; eddy dissipation, effective viscosity, and turbulent kinetic energy.

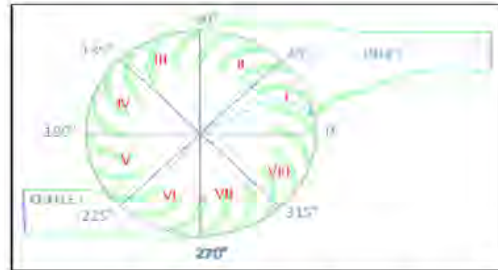


Figure-3. Flow zone configuration.

Governing Equations

Averaging on Navier-Stokes equation like on the other RANS-based turbulence model, has caused the Reynolds stress term. The Reynolds stress $\rho \overline{u_i u_j}$ (kg.m/s²) also correlates the turbulent viscosity. Momentum transfer caused by turbulent flow modeled by the use of eddy viscosity concept. In turbulent flow, turbulent viscosity ν_T (m²/s) occur as additional viscosity term and caused the increasing of total viscosity ν_{eff} (m²/s). The Reynolds stress can be defined as velocity gradient [28], [29]. Total viscosity of the flow described by [24].

$$\rho \overline{u_i u_j} = \frac{\rho}{2} \overline{u_i^2} \delta_{ij} + \left(\nu_T \left[\frac{\partial u_i}{\partial x_j} + \frac{\partial u_j}{\partial x_i} \right] \right) \quad (1)$$

$$\nu_{eff} = \nu_T + \nu \quad (2)$$

$$\nu_T = C_\nu \frac{k^2}{\epsilon} \quad (3)$$

Transferred energy from large scale eddies to small scale eddies, and how the energy is dissipated in RNG $k-\epsilon$ governed by Kolmogorov theorem [25], [30], [31]. In turbulent flow, amount of energy supply can be assumed equal to be dissipated on certain rate. Therefore, this energy rate is small compared to energy dissipated [32]. In Kolmogorov theorem, where velocity fluctuations tends to be universal, the amount of energy assumed only depends on turbulent dissipation rate (ϵ) and length scale (l) [25], [33].

$$E(k) = C_k \epsilon^{-1/3} k^{-5/3} \quad (4)$$

The RNG $k-\epsilon$ turbulence model uses the normalized Navier-Stokes equation where acceleration and force governed according to [25], [34]:

$$\frac{\partial \mathbf{u}}{\partial t} + (\mathbf{u} \cdot \nabla) \mathbf{u} = \mathbf{f} - \frac{1}{\rho} \nabla p + \nu_T \nabla^2 \mathbf{u} \quad (5)$$



3 Inverse-Turbulent Prandtl number, α described the ratio between thermal diffusivity and turbulent viscosity according to: [25] [35] [36]

$$\alpha = \frac{\nu_t}{\nu} \quad (6)$$

2 In general fluids, the heat transfer is dominated by molecular diffusion, the thermal resistance is distributed over the entire cross-section, and the turbulent Prandtl number, α , assume equal to one [37]. RNG $k-\epsilon$ turbulence models is a RANS-based turbulence model with two transport equation; k (turbulence kinetic energy) and ϵ (turbulent dissipation). RNG $k-\epsilon$ turbulence model applied since this model is suitable to predict the recirculating flows that dominantly occur in crossflow runner [24-27]. RNG $k-\epsilon$ use here is an in-house codes from the CFDSoft CFD-software.

Transport equation of k [25]

$$\frac{\partial k}{\partial t} + (\vec{v} \cdot \nabla) k = 0,8(23\frac{v}{l})^{1/2} - \sigma + \frac{\partial}{\partial x_j} \alpha_{kT} \frac{\partial k}{\partial x_j} \quad (7)$$

Transport equation of ϵ [25]

$$\frac{\partial \epsilon}{\partial t} = -1,068 \frac{\epsilon}{k} \frac{\partial k}{\partial x_j} \frac{\partial k}{\partial x_j} - 1,7219 \frac{\epsilon^2}{k} + \frac{\partial}{\partial x_j} \alpha_{\epsilon T} \frac{\partial \epsilon}{\partial x_j} \quad (8)$$

RESULTS

Experiment Result

The results shows below obtained from the experimental data of the Proto X-3 Bioenergy MGT that has been designed and developed. The idea to shows almost the whole parameters of the Prototype is to state that the parameters that is used for the CFD simulation of the cross-flow fan is obtained at the stable condition of the MGT. The 1st stage of compressor and turbine is a radial turbocharger. Such condition is represented by turbine inlet temperature to the running time as shown on Figure-4.

- Ambient temperature : 33°C
- Shaft speed (1st stage) : 69477 RPM
- Air flow rate (1st stage) : 0,1663 kg/s
- T1 (1stage compressor inlet) : 83,78°C
- Pressure ratio (1st stage comp.) : 1,45
- T3 (Turbine Inlet Temperature - TIT) : 707,8°C
- Cross-flow runner speed : 1500 RPM

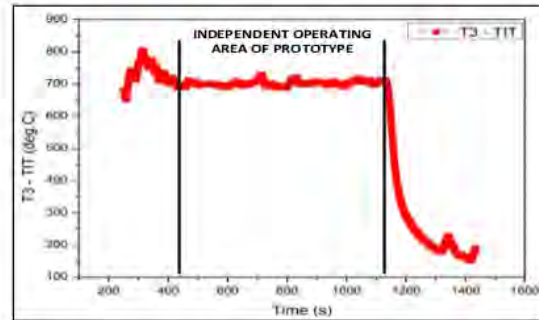


Figure-4. Representation of prototype running data.

First stage inlet velocity from the inlet air flow rate:

$$V_1 = 46,667 \text{ m/s}$$

Cross-section area of the inlet cross-flow runner:

$$A = 0,009964 \text{ m}^2$$

Reynolds number Re at cross-flow inlet; ρ = density of air, μ = dynamic viscosity

$$Re = \frac{\rho V D_H}{\mu}$$

With hydraulic diameter D_H ,

$$D_H = \frac{4A}{P} \text{ With } A = \text{cross-sectional area} = 0,009964 \text{ m}^2$$

$$P = \text{wetted perimeter} = 2(0,0999\text{m} + 0,0999\text{m}) = 0,27\text{m}$$

$$D_H = 0,0828\text{m}$$

Then

$$Re = \frac{0,4368 \text{ kg/m}^3 \times 46,667 \text{ m/s} \times 0,0828\text{m}}{2,64 \times 10^{-2} \text{ N}\cdot\text{s/m}^2} = 80,900$$

From the numerical procedure, the flow rate of runner at inlet and outlet is 0,1536 m³/s, the torque at the sliding mesh wall is 18,55 Nm resulting 2,91 kW. Validation of the mass flow rate to the 1st stage compressor inlet underpredict 5,7% from the 1st stage compressor map (this compressor map got by request from turbocharger manufacturer).

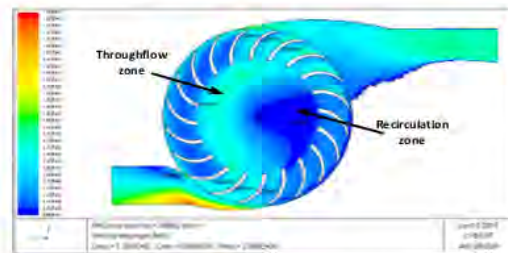


Figure-5. Velocity magnitude.

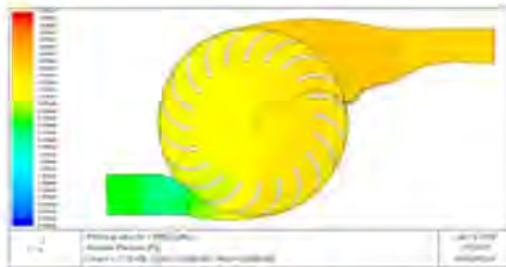


Figure-6. Absolute static pressure.

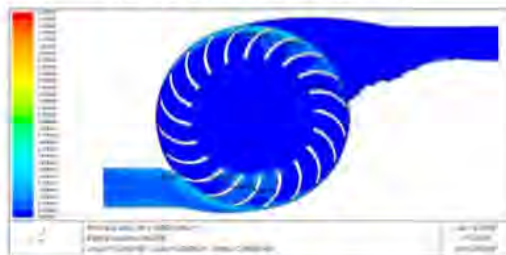


Figure-7. Eddy dissipation.

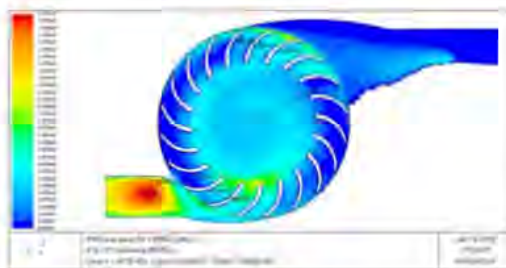


Figure-8. Turbulence kinetic energy.

Velocity magnitude of cross-flow runner shows that two dominant vortices occur inside the runner. The forced vortex, occurs in throughflow where the fluid passed the 1st inlet to the 2nd inlet. At the other side of the throughflow zone, the area with less-fluid concentration forms the eccentric vortex in recirculated flow. This eccentric vortex occurs at zone I and VIII or at $315^\circ - 45^\circ$ according to Figure-2, and Figure-3. This result also confirms that eccentric vortex is caused by recirculation flow.

Many previous papers show that this eccentric vortex is dominant flow at runner and decreasing the runner performance, as concluded by Sun et.al (2015) and Choi et.al (2007) [17], [38]. The *RNG k-ε* turbulence model shows this vortex fairly in figures above. Recirculation vortex occurs at the inner side at zone VII and VIII while the throughflow vortex at the outer side of the runner at zone III and IV. This zone range also gained by Hirata et.al where that the recirculation flow that caused eccentric vortex occurs at $330^\circ-360^\circ$ region [20]. In line with the velocity prediction, the result of predicted

absolute static pressure is shown on Figure 6. The figure describes that pressure drop occurs in operated condition of the runner about 14300 Pa (0,143 bar). This drop is suspected to the occurrence of the eccentric vortex as shown on velocity magnitude contour, as well as the Boussinesq hypothesis about the additional turbulent viscosity in eq. (3). As the lower velocity due to eccentric vortex in figure 5, the pressure in recirculation zone (zone VII and VIII) higher than at zone III and IV as shown on Figure-6.

Figure-7 shows the eddy dissipation on cross-flow runner. The turbulence dissipate dominantly at the area around the blade at inlet zone and at outlet zone and nearly zero at circulation area at zone VII and VIII; throughflow zone and the recirculation zone of the runner. Since dissipation is a turbulence characteristic that represent turbulent decaying in lower velocity, the numerical result shows fairly. This is according to the velocity magnitude contour which shows that the high velocity inside the runner while lower velocity occur at area around the blades, and cause the flow dissipates.

Turbulence kinetic energy contour is shown on Figure-8. Contour of turbulence kinetic energy shows maximum at the outlet side of the system where recirculation flow occurred caused by cross-sectional change. Special phenomena occurs at the center of the runner, area of the throughflow and the recirculation flow. Leaving the 1st inlet stage with lower viscosity, the turbulent kinetic energy increased gradually. Another phenomena occur at recirculation zone, where the turbulence kinetic energy much higher than at the throughflow zone. This suspected due to velocity fluctuation of the recirculation flow since turbulence kinetic energy represents the velocity fluctuation on all direction; u, v, and w respectively.

CONCLUSIONS

CFD simulation is deduced with *RNG k-ε* turbulence model with 5,7% flow rate underprediction to the actual flow rate. Velocity magnitude of cross-flow runner shows that two dominant vortices occur inside the runner, the forced vortex and eccentric vortex. The forced vortex zone occurs in throughflow (zone III and IV) and the eccentric vortices occur at the other sides (Zone VII and VIII). Pressure drop occurs in operated condition of the runner about 14300 Pa which suspected by the occurrence of the eccentric vortex.

The turbulence dissipate dominantly at the area around the blade at inlet zone and at outlet zone and nearly zero at circulation area; throughflow zone and the recirculation zone of the runner. Contour of turbulence kinetic energy shows maximum at the outlet side of the system where recirculation flow occurs caused by cross-sectional change.

It can be concluded that The *RNG k-ε* turbulence model is adequate to describe vortices, especially for cross-flow runner; i.e. throughflow and recirculating vortex and for further development of the CFR design.



ACKNOWLEDGEMENT

The authors would like to thanks DRPM Universitas Indonesia for funding this research through "Hibah Unggulan Perguruan Tinggi 2015".

REFERENCES

- [1] C. Mockmore and F. Merryfield, "The Banki Water Turbine," Bulletin Series, no. 25, February 1949.
- [2] S. Khosrowpanah and A. Fiuzat, "Experimental Study of Cross-Flow Turbine," J. Hydraulic Eng., vol. 114, pp. 299-314, 1988.
- [3] V. Sammartano, C. Arico, A. Carravetta and O. Fecarotta, "Banki-Michell Optimal Design by Computational Fluid Dynamics Testing and Hydrodynamic Analysis," Energies, vol. 6, pp. 2362-2385, 2013.
- [4] A. I. Siswantara, Budiarmo and S. Darmawan, "Investigation of Inverse-Turbulent-Prandtl number with Four RNG k- ϵ Turbulence Models on Compressor Discharge Pipe of Bioenergy Micro Gas Turbine," in International Meeting in Advance Thermofluids (IMAT) 7 2014, Kuala Lumpur, 2014.
- [5] A. I. Siswantara, S. Darmawan and O. Purba, "Combustion Analysis of Proto X-2 Bioenergy Micro Gas Turbine with Diesel-Bioethanol blends," in Quality in Research (QiR) 2013, Yogyakarta.
- [6] A. Huicochea, W. Rivera, G. Guitierrez-Urueta and J. C. Bruno, "Thermodynamics analysis of a trigeneration system consisting of a micro gas turbine and a double effect absorption chiller," Applied Thermal Engineering, vol. 31, pp. 3347-3353, 2011.
- [7] F. Basrawi, T. Yamada and S. Obara, "Theoretical analysis of performance of a micro gas turbine co/trigeneration system for residential buildings in a tropical region," Energy and Buildings, vol. 67, pp. 108-117, 2013.
- [8] K. Sim, B. Koo, C. H. Kim and T. H. Kim, "Development and performance measurement of micro-power pack using micro-gas turbine driven automotive alternators," Applied Energy, vol. 102, pp. 309-319, 2013.
- [9] I. Gokalp and E. Lebas, "Alternative fuels for industrial gas turbines (AFTUR)," Applied Thermal Engineering, vol. 24, pp. 1655-1663, 2004.
- [10] M. Prussi, D. Chiamonti, G. Riccio, F. Martelli and L. Pari, "Straight vegetable oil use in Micro-Gas Turbines: System adaptation and testing," Applied Energy, vol. 89, pp. 287-295, 2012.
- [11] P. R. Tuckey, "The aerodynamics and performance of a cross flow fan," Durham University, Durham, 1983.
- [12] S. Murata and K. Nishihara, "An experimental study of cross flow fan," Bulletin of JSME, vol. 19, no. 129, 1976.
- [13] S. Murata, T. Ogawa, I. Shimizu, K. Nishihara and K. Kinoshita, "A study of cross flow fan with inner guide apparatus," JSME, vol. 21, no. 154, 1978.
- [14] T.-A. Kim, D.-W. Kim, S.-K. Park and Y. J.-Kim, "Performance of a cross-flow fan with various shapes of a rearguider and exit duct," Journal of Mechanical Science and Technology, vol. 22, pp. 1876-1882, 2008.
- [15] Y. J. Kim, "Flow Characteristics in a Cross-Flow Fan with Various Design Parameters," in The 4th International Symposium on Fluid Machinery and Fluid Engineering, Beijing, China, 2008.
- [16] A. Toffolo, "On the theoretical link between design parameters and performance in cross-flow fans: a numerical and experimental study," Computers & Fluids, vol. 34, pp. 49-66, 2005.
- [17] K. Sun, H. Ouyang, J. Tian, Y. Wu and Z. Du, "Experimental and numerical investigations on the eccentric vortex of the cross flow fans," International Journal of Refrigeration, vol. 50, pp. 146-155, 2015.
- [18] M. Kaniecki, "Modernization of the outflow system of cross-flow turbines," Task Quarterly, vol. 6, no. 4, pp. 601-608, 2002.
- [19] W. T. Cheng, "Experimental and numerical analysis of a crossflow fan," Master Thesis - Naval Postgraduate School, California, 2003.
- [20] K. Hirata, Y. Iida, A. Takushima and J. Funaki, "Instantaneous pressure measurement on a rotating blade of a cross-flow impeller," Journal of Environment and Engineering, vol. 3, no. 2, 2008.
- [21] B. Launder and D. Spalding, "The Numerical Computation of Turbulent Flows," Computer Methods in Applied Mechanics and Engineering, vol. 3, pp. 269-289, 1974.
- [22] B. Lakshminarayana, Fluid Dynamics and Heat Transfer of Turbomachinery, John Wiley & Sons, Inc., 1996.
- [23] E. M. Marshall and A. Bakker, "Computational Fluid Mixing - Technical Notes," Fluent Inc., Lebanon, NH, 2001.



www.arnpjournals.com

- [24] ⁴ TM-107, "Introduction to the Renormalization Group Method and Turbulence Modeling," Fluent Inc., Lebanon, 1993.
- [25] ⁴ V. Yakhot and S. A. Orszag, "Renormalization Group Analysis of Turbulence. I. Basic Theory," *Journal of Scientific Computing*, vol. 1, no. 1, pp. 3-51, 1986.
- [26] ⁴ H. Versteeg and W. Malalasekera, *An Introduction to Computational Fluid Dynamics, The Finite Volume Method*, 2 ed., Essex: Pearson Educational Limited, 2007.
- [27] ⁴ S. Thangam and C. Speziale, "Turbulent Flow Past a Backward-Facing Step: A Critical Evaluation of Two-Equation Models," *AIAA Journal*, vol. 30, no. 5, 1992.
- [28] ⁴ S. Lam, "On The RNG Theory of Turbulence," *Physics of Fluids A*, vol. 4, pp. 1007-1017, 1992.
- [29] E. M. Marshall and A. Bakker, *Computational Fluid Mixing*, Lebanon, New Hampshire: John Wiley & Sons, Inc., 2003.
- [30] ⁴ C. Speziale, R. So and B. Younis, "On the prediction of turbulent secondary flows," Hampton, Virginia, 1992.
- [31] A. Escue and J. Cui, "Comparison of Turbulence Models in Simulating Swirling Pipe Flows," *Applied Mathematic Modelling*, vol. 34, pp. 2840-2849, 2010.
- [32] ² H. Tennekes and J. Lumley, *A First Course In Turbulence*, 3rd ed., MIT Press, 1974.
- [33] V. Yakhot, S. Orszag, S. Thangam, T. Gatski and C. Speziale, "Development of turbulence model for shear flows by a double expansion technique," *Phys. Fluid A*, vol. 4, no. 7, pp. 1510-1520, 1992.
- [34] B. R. Munson, D. F. Young, T. H. Okiishi and W. W. Huebsch, *Fundamentals of fluid mechanics*, 6th ed., John Wiley & Sons, Inc., 2009.
- [35] Budiarso, A. I. Siswantara, S. Darmawan and H. Tanujaya, "Inverse-turbulent Prandtl number effects on Reynolds number of RNG k- ϵ turbulence model on cylindrical curved-pipe," *Applied Mechanics and Materials*, vol. 758, pp. 35-44, 2015.
- [36] S. Darmawan, Budiarso and A. I. Siswantara, "CFD Investigation Of Standard k- ϵ and RNG k- ϵ Turbulence Model In Compressor Discharge Of Proto X-2 Bioenergy Micro Gas Turbine," in *The 8th Fluid and Thermal Energy Conversion (FTEC) 2013*, Semarang, 2013.
- [37] ⁴ F. Chen, X. Huai, J. Cai, X. Li and R. Meng, "Investigation on the applicability of turbulent-Prandtl-number models for the liquid lead-bismuth eutectic," *Nuclear Engineering and Design*, vol. 257, pp. 128-133, 2013.
- [38] Y. Choi, J. Lim, Y. Kim and Y. Lee, "CFD analysis for the performance of cross-flow hydraulic turbine with the variation of blade angle," in *New Trends in Fluid Mechanics Research - The 5th International Conference on Fluid Mechanics*, Shanghai, China, 2007.
- [39] W. Meier, X. Duan and P. Weigand, "Reaction zone structures and mixing characteristics of partially premixed swirling CH₄/air flames in a gas turbine model combustor," *Proceedings of the Combustion Institute*, vol. 30, pp. 835-842, 2005.